

SET Rabbit Polyclonal Antibody



CAB6212

Product Information

Size:

20uL, 50uL, 100uL, 200uL

Observed MW:

33kDa

Calculated MW:

30kDa/31kDa/32kDa/33kDa

Applications:

WB IHC IF

Reactivity:

Human, Mouse, Rat

Protein Background

The protein encoded by this gene inhibits acetylation of nucleosomes, especially histone H4, by histone acetylases (HAT). This inhibition is most likely accomplished by masking histone lysines from being acetylated, and the consequence is to silence HAT-dependent transcription. The encoded protein is part of a complex localized to the endoplasmic reticulum but is found in the nucleus and inhibits apoptosis following attack by cytotoxic T lymphocytes. This protein can also enhance DNA replication of the adenovirus genome. Several transcript variants encoding different isoforms have been found for this gene.

Immunogen information

Gene ID:

6418

Uniprot

Q01105

Synonyms:

SET; 2PP2A; I2PP2A; IGAAD; IPP2A2; PHAPII; TAF-I; TAF-IBETA

Antibody Information

Recommended dilutions:

WB 1:500 - 1:2000 IHC 1:50
- 1:200 IF 1:50 - 1:200

Source:

Rabbit

Isotype:

IgG

Purification:

Affinity purification

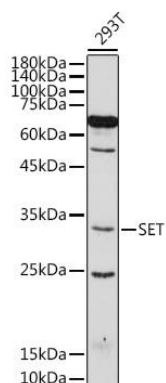
Immunogen:

Recombinant fusion protein containing a sequence corresponding to amino acids 1-277 of human SET (NP_003002.2).

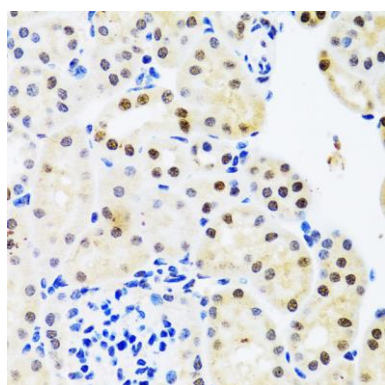
Storage:

Store at -20°C. Avoid freeze / thaw cycles. Buffer: PBS with 0.02% sodium azide, 50% glycerol, pH7.3.

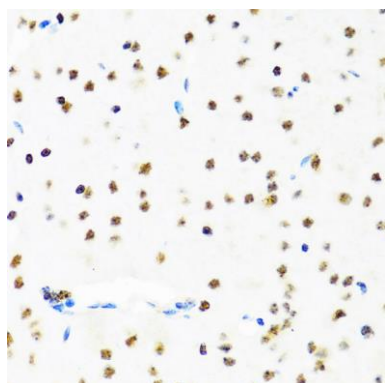
Product Images



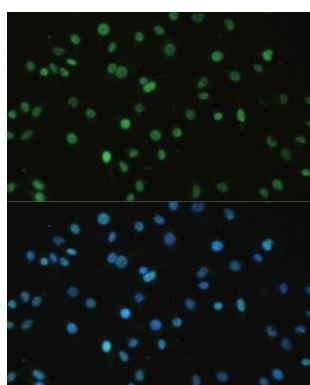
Western blot analysis of extracts of 293T cells, using SET antibody (CAB6212) at 1:500 dilution. Secondary antibody: HRP Goat Anti-Rabbit IgG (H+L) (CABS014) at 1:10000 dilution. Lysates/proteins: 25ug per lane. Blocking buffer: 3% nonfat dry milk in TBST. Detection: ECL Basic Kit (CABM00020). Exposure time: 180s.



Immunohistochemistry of paraffin-embedded mouse kidney using SET antibody (CAB6212) at dilution of 1:100 (40x lens).



Immunohistochemistry of paraffin-embedded mouse brain using SET antibody (CAB6212) at dilution of 1:100 (40x lens).



Immunofluorescence analysis of C6 cells using SET antibody (CAB6212) at dilution of 1:100. Blue: DAPI for nuclear staining.