

FLOT1 Rabbit Polyclonal Antibody



CAB6220

Product Information

Size:

20uL, 50uL, 100uL, 200uL

Observed MW:

47kDa

Calculated MW:

42kDa/47kDa

Applications:

WB IHC IF IP

Reactivity:

Human, Mouse, Rat

Protein Background

This gene encodes an protein that localizes to the caveolae, which are small domains on the inner cell membranes. This protein plays a role in vesicle trafficking and cell morphology. Alternative splicing results in multiple transcript variants.

Immunogen information

Gene ID:

10211

Uniprot

O75955

Synonyms:

FLOT1

Antibody Information

Recommended dilutions:

WB 1:500 - 1:2000 IHC 1:50

- 1:200 IF 1:10 - 1:100 IP

1:50 - 1:200

Source:

Rabbit

Isotype:

IgG

Purification:

Affinity purification

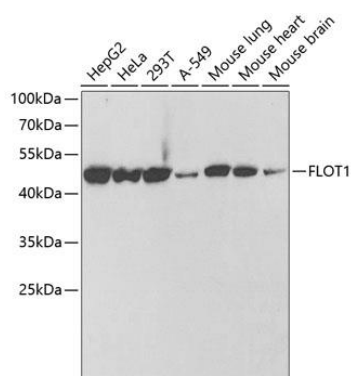
Immunogen:

Recombinant fusion protein containing a sequence corresponding to amino acids 128-427 of human FLOT1 (NP_005794.1).

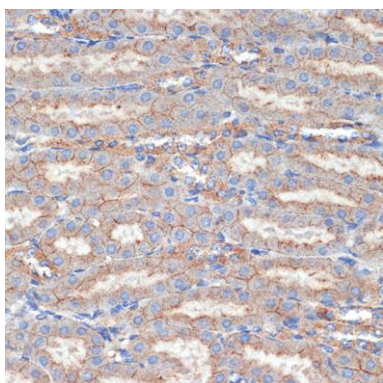
Storage:

Store at -20°C. Avoid freeze / thaw cycles. Buffer: PBS with 0.02% sodium azide, 50% glycerol, pH7.3.

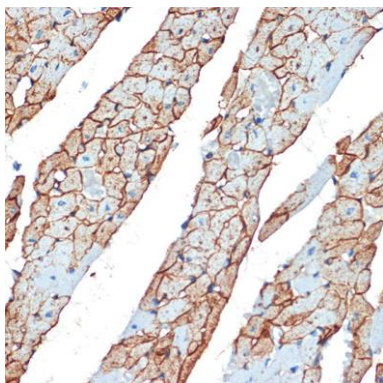
Product Images



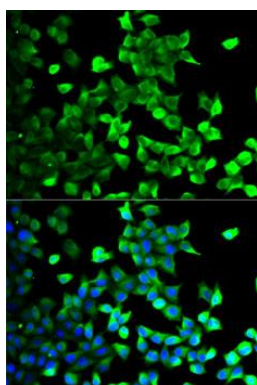
Western blot analysis of extracts of various cell lines, using FLOT1 antibody (CAB6220) at 1:1000 dilution. Secondary antibody: HRP Goat Anti-Rabbit IgG (H+L) (CABS014) at 1:10000 dilution. Lysates/proteins: 25ug per lane. Blocking buffer: 3% nonfat dry milk in TBST. Detection: ECL Basic Kit (CABM00020). Exposure time: 30s.



Immunohistochemistry of paraffin-embedded mouse kidney using FLOT1 Rabbit pAb (CAB6220) at dilution of 1:100 (40x lens).



Immunohistochemistry of paraffin-embedded rat heart using FLOT1 Rabbit pAb (CAB6220) at dilution of 1:100 (40x lens).



Immunofluorescence analysis of U2OS cells using FLOT1 antibody (CAB6220). Blue: DAPI for nuclear staining.