

# CBX4 Rabbit Polyclonal Antibody



CAB6221

---

## Product Information

### Size:

20uL, 50uL, 100uL, 200uL

### Observed MW:

85kDa

### Calculated MW:

31kDa/61kDa

### Applications:

WB IHC IP

### Reactivity:

Human, Mouse

## Antibody Information

### Recommended dilutions:

WB 1:500 - 1:2000 IHC 1:50  
- 1:200 IP 1:50 - 1:200

### Source:

Rabbit

### Isotype:

IgG

### Purification:

Affinity purification

## Protein Background

### Immunogen information

#### Gene ID:

8535

#### Uniprot

O00257

#### Synonyms:

CBX4; NBP16; PC2

#### Immunogen:

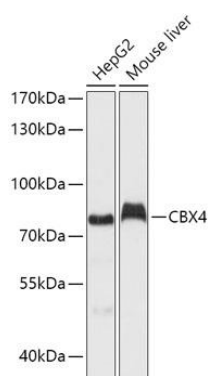
Recombinant fusion protein containing a sequence corresponding to amino acids 401-560 of human CBX4 (NP\_003646.2).

#### Storage:

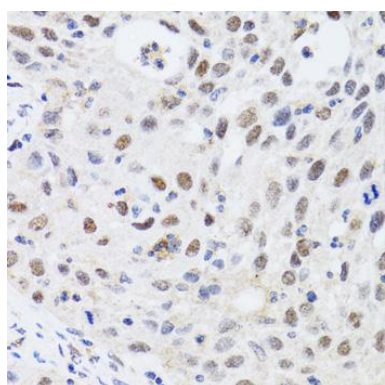
Store at -20°C. Avoid freeze / thaw cycles. Buffer: PBS with 0.02% sodium azide, 50% glycerol, pH7.3.

## Product Images

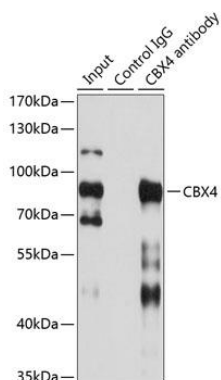
---



Western blot analysis of extracts of various cell lines, using CBX4 antibody (CAB6221) at 1:1000 dilution. Secondary antibody: HRP Goat Anti-Rabbit IgG (H+L) (CABS014) at 1:10000 dilution. Lysates/proteins: 25ug per lane. Blocking buffer: 3% nonfat dry milk in TBST. Detection: ECL Basic Kit (CABM00020). Exposure time: 60s.



Immunohistochemistry of paraffin-embedded human lung cancer using CBX4 antibody (CAB6221) at dilution of 1:100 (40x lens).



Immunoprecipitation analysis of 200ug extracts of HepG2 cells using 1ug CBX4 antibody (CAB6221). Western blot was performed from the immunoprecipitate using CBX4 antibody (CAB6221) at a dilution of 1:500. Detection: ECL Enhanced Kit (CABM00021). Exposure time: 10s.