

TRIM13 Rabbit Polyclonal Antibody



CAB6225

Product Information

Size:

20uL, 50uL, 100uL, 200uL

Observed MW:

Calculated MW:

19kDa/46kDa/47kDa

Applications:

IF

Reactivity:

Human

Antibody Information

Recommended dilutions:

IF 1:20 - 1:50

Source:

Rabbit

Isotype:

IgG

Purification:

Affinity purification

Protein Background

This gene encodes a member of the tripartite motif (TRIM) family. The TRIM motif includes three zinc-binding domains, a RING, a B-box type 1 and a B-box type 2, and a coiled-coil region. This gene is located on chromosome 13 within the minimal deletion region for B-cell chronic lymphocytic leukemia. Multiple alternatively spliced transcript variants have been found for this gene.

Immunogen information

Gene ID:

10206

Uniprot

O60858

Synonyms:

TRIM13; CAR; DLEU5; LEU5; RFP2; RNF77

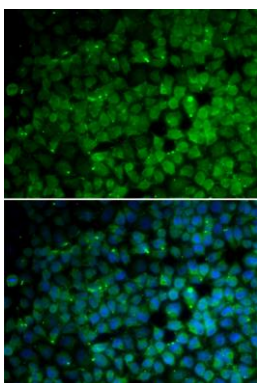
Immunogen:

Recombinant fusion protein containing a sequence corresponding to amino acids 40-310 of human TRIM13 (NP_001007279.1).

Storage:

Store at -20°C. Avoid freeze / thaw cycles. Buffer: PBS with 0.02% sodium azide, 50% glycerol, pH7.3.

Product Images



Immunofluorescence analysis of HeLa cells using TRIM13 antibody (CAB6225). Blue: DAPI for nuclear staining.