

# ESD Rabbit Polyclonal Antibody



CAB6228

---

## Product Information

### Size:

20uL, 50uL, 100uL, 200uL

### Observed MW:

36kDa

### Calculated MW:

31kDa

### Applications:

WB IHC

### Reactivity:

Human, Mouse

## Protein Background

This gene encodes a serine hydrolase that belongs to the esterase D family. The encoded enzyme is active toward numerous substrates including O-acetylated sialic acids, and it may be involved in the recycling of sialic acids. This gene is used as a genetic marker for retinoblastoma and Wilson's disease.

## Immunogen information

### Gene ID:

2098

### Uniprot

P10768

### Synonyms:

ESD; FGH

## Antibody Information

### Recommended dilutions:

WB 1:500 - 1:2000 IHC 1:50  
- 1:200

### Source:

Rabbit

### Isotype:

IgG

### Purification:

Affinity purification

### Immunogen:

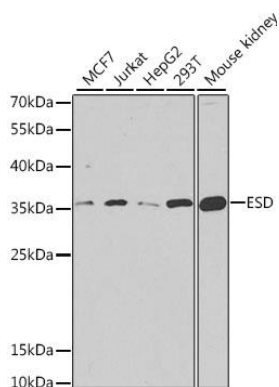
Recombinant fusion protein containing a sequence corresponding to amino acids 1-282 of human ESD (NP\_001975.1).

### Storage:

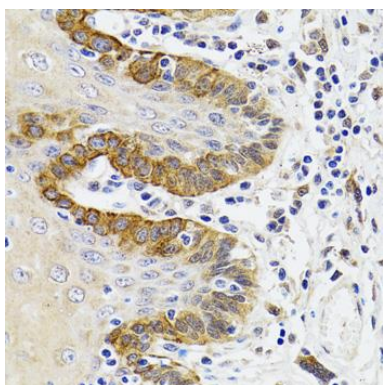
Store at -20°C. Avoid freeze / thaw cycles. Buffer: PBS with 0.02% sodium azide, 50% glycerol, pH7.3.

## Product Images

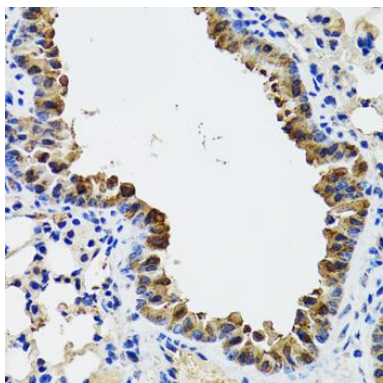
---



Western blot analysis of extracts of various cell lines, using ESD antibody (CAB6228) at 1:1000 dilution. Secondary antibody: HRP Goat Anti-Rabbit IgG (H+L) (CABS014) at 1:10000 dilution. Lysates/proteins: 25ug per lane. Blocking buffer: 3% nonfat dry milk in TBST. Detection: ECL Basic Kit (CABM00020). Exposure time: 90s.



Immunohistochemistry of paraffin-embedded Human trachea using ESD antibody (CAB6228) at dilution of 1:100 (40x lens).



Immunohistochemistry of paraffin-embedded mouse lung using ESD antibody (CAB6228) at dilution of 1:100 (40x lens).