

SQS/FDFT1 Rabbit Polyclonal Antibody



CAB6229

Product Information

Size:

20uL, 50uL, 100uL, 200uL

Observed MW:

48kDa

Calculated MW:

35kDa/38kDa/40kDa/43kDa/
48kDa

Applications:

WB IHC IF

Reactivity:

Human, Mouse, Rat

Protein Background

This gene encodes a membrane-associated enzyme located at a branch point in the mevalonate pathway. The encoded protein is the first specific enzyme in cholesterol biosynthesis, catalyzing the dimerization of two molecules of farnesyl diphosphate in a two-step reaction to form squalene.

Immunogen information

Gene ID:

2222

Uniprot

P37268

Synonyms:

FDFT1; DGPT; ERG9; SQS; SS

Antibody Information

Recommended dilutions:

WB 1:500 - 1:2000 IHC 1:50
- 1:200 IF 1:50 - 1:200

Source:

Rabbit

Isotype:

IgG

Purification:

Affinity purification

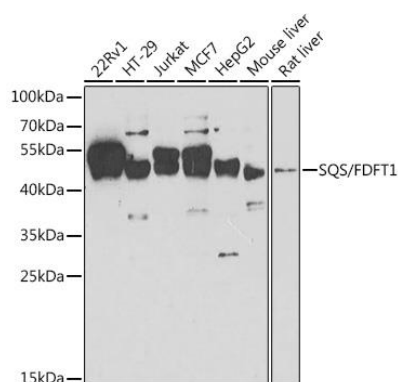
Immunogen:

Recombinant fusion protein containing a sequence corresponding to amino acids 1-260 of human SQS/FDFT1 (NP_004453.3).

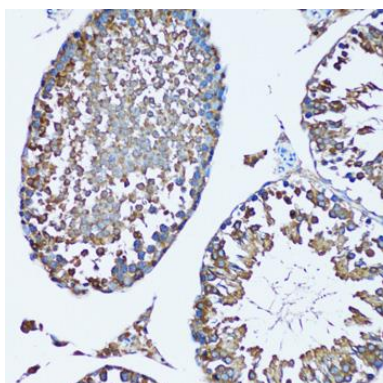
Storage:

Store at -20°C. Avoid freeze / thaw cycles. Buffer: PBS with 0.02% sodium azide, 50% glycerol, pH7.3.

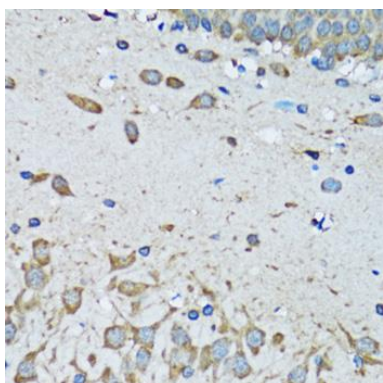
Product Images



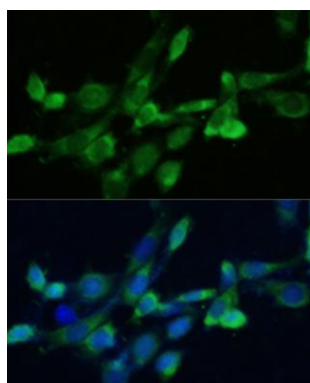
Western blot analysis of extracts of various cell lines, using SQS/FDFT1 antibody (CAB6229) at 1:1000 dilution. Secondary antibody: HRP Goat Anti-Rabbit IgG (H+L) (CABS014) at 1:10000 dilution. Lysates/proteins: 25ug per lane. Blocking buffer: 3% nonfat dry milk in TBST. Detection: ECL Enhanced Kit (CABM00021). Exposure time: 60s.



Immunohistochemistry of paraffin-embedded mouse testis using SQS/FDFT1 antibody (CAB6229) at dilution of 1:100 (20x lens).



Immunohistochemistry of paraffin-embedded mouse brain using SQS/FDFT1 antibody (CAB6229) at dilution of 1:100 (40x lens).



Immunofluorescence analysis of NIH-3T3 cells using SQS/FDFT1 antibody (CAB6229) at dilution of 1:100. Blue: DAPI for nuclear staining.