

GIP Rabbit Polyclonal Antibody



CAB6230

Product Information

Size:

20uL, 50uL, 100uL, 200uL

Observed MW:

17kDa

Calculated MW:

17kDa

Applications:

WB IHC IF

Reactivity:

Human, Mouse, Rat

Protein Background

This gene encodes an incretin hormone and belongs to the glucagon superfamily. The encoded protein is important in maintaining glucose homeostasis as it is a potent stimulator of insulin secretion from pancreatic beta-cells following food ingestion and nutrient absorption. This gene stimulates insulin secretion via its G protein-coupled receptor activation of adenylyl cyclase and other signal transduction pathways. It is a relatively poor inhibitor of gastric acid secretion.

Immunogen information

Gene ID:

2695

Uniprot

P09681

Synonyms:

GIP

Antibody Information

Recommended dilutions:

WB 1:500 - 1:2000 IHC 1:50
- 1:200 IF 1:50 - 1:200

Source:

Rabbit

Isotype:

IgG

Purification:

Affinity purification

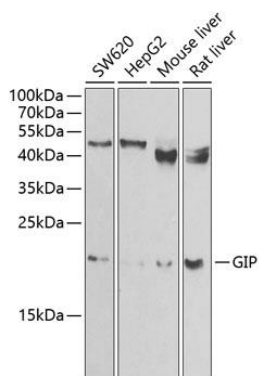
Immunogen:

Recombinant fusion protein containing a sequence corresponding to amino acids 22-153 of human GIP (NP_004114.1).

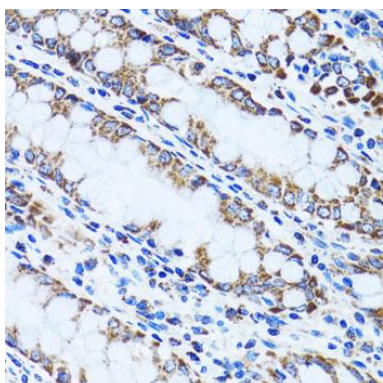
Storage:

Store at -20°C. Avoid freeze / thaw cycles. Buffer: PBS with 0.02% sodium azide, 50% glycerol, pH7.3.

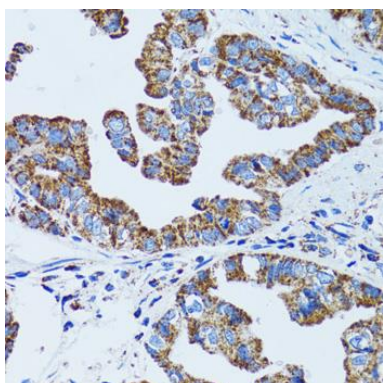
Product Images



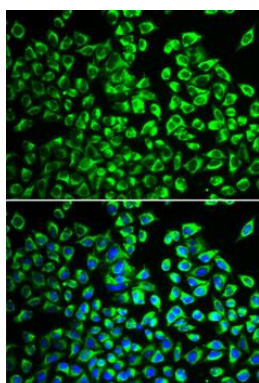
Western blot analysis of extracts of various cell lines, using GIP antibody (CAB6230) at 1:1000 dilution. Secondary antibody: HRP Goat Anti-Rabbit IgG (H+L) (CABS014) at 1:10000 dilution. Lysates/proteins: 25ug per lane. Blocking buffer: 3% nonfat dry milk in TBST. Detection: ECL Enhanced Kit (CABM00021). Exposure time: 60s.



Immunohistochemistry of paraffin-embedded human colon using GIP antibody (CAB6230) at dilution of 1:100 (40x lens).



Immunohistochemistry of paraffin-embedded human gastric cancer using GIP antibody (CAB6230) at dilution of 1:100 (40x lens).



Immunofluorescence analysis of U2OS cells using GIP antibody (CAB6230). Blue: DAPI for nuclear staining.