

TIA1 Rabbit Polyclonal Antibody



CAB6237

Product Information

Size:

20uL, 50uL, 100uL, 200uL

Observed MW:

54kDa

Calculated MW:

24kDa/41kDa/42kDa

Applications:

WB IHC IF

Reactivity:

Human, Mouse, Rat

Antibody Information

Recommended dilutions:

WB 1:500 - 1:2000 IHC 1:50
- 1:200 IF 1:20 - 1:100

Source:

Rabbit

Isotype:

IgG

Purification:

Affinity purification

Protein Background

The product encoded by this gene is a member of a RNA-binding protein family and possesses nucleolytic activity against cytotoxic lymphocyte (CTL) target cells. It has been suggested that this protein may be involved in the induction of apoptosis as it preferentially recognizes poly(A) homopolymers and induces DNA fragmentation in CTL targets. The major granule-associated species is a 15-kDa protein that is thought to be derived from the carboxyl terminus of the 40-kDa product by proteolytic processing. Alternative splicing resulting in different isoforms of this gene product has been described in the literature.

Immunogen information

Gene ID:

7072

Uniprot

P31483

Synonyms:

TIA1; TIA-1; WDM

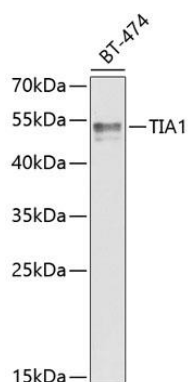
Immunogen:

Recombinant fusion protein containing a sequence corresponding to amino acids 1-193 of human TIA1 (NP_071505.2).

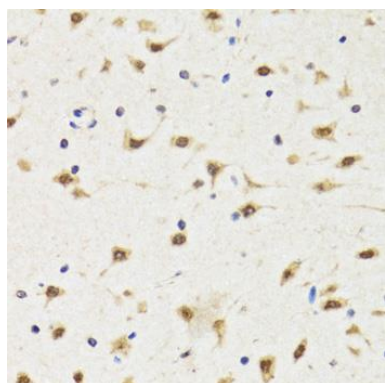
Storage:

Store at -20°C. Avoid freeze / thaw cycles. Buffer: PBS with 0.02% sodium azide, 50% glycerol, pH7.3.

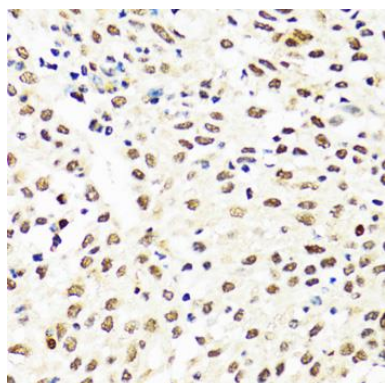
Product Images



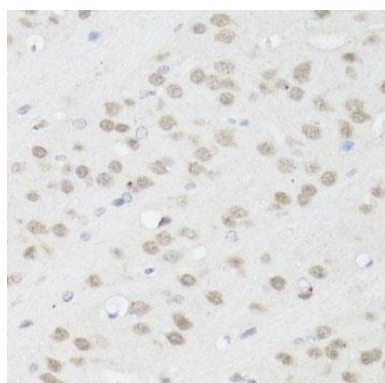
Western blot analysis of extracts of BT-474 cells, using TIA1 antibody (CAB6237) at 1:1000 dilution. Secondary antibody: HRP Goat Anti-Rabbit IgG (H+L) (CABS014) at 1:10000 dilution. Lysates/proteins: 25ug per lane. Blocking buffer: 3% nonfat dry milk in TBST. Detection: ECL Enhanced Kit (CABM00021). Exposure time: 60s.



Immunohistochemistry of paraffin-embedded rat brain using TIA1 Antibody (CAB6237) at dilution of 1:100 (40x lens).



Immunohistochemistry of paraffin-embedded human lung cancer using TIA1 Antibody (CAB6237) at dilution of 1:100 (40x lens).



Immunohistochemistry of paraffin-embedded mouse brain using TIA1 antibody (CAB6237) at dilution of 1:100 (40x lens).