

AKT1S1 Rabbit Polyclonal Antibody



CAB6238

Product Information

Size:

20uL, 50uL, 100uL, 200uL

Observed MW:

50kDa

Calculated MW:

13kDa/27kDa/29kDa

Applications:

WB IHC IF

Reactivity:

Human, Mouse, Rat

Antibody Information

Recommended dilutions:

WB 1:500 - 1:2000 IHC 1:50
- 1:100 IF 1:50 - 1:100

Source:

Rabbit

Isotype:

IgG

Purification:

Affinity purification

Protein Background

Immunogen information

Gene ID:

84335

Uniprot

Q96B36

Synonyms:

AKT1S1; Lobe; PRAS40

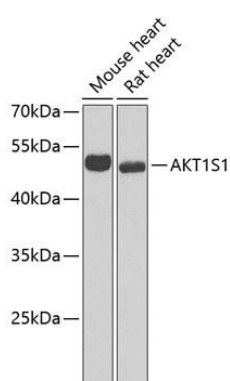
Immunogen:

Recombinant fusion protein containing a sequence corresponding to amino acids 152-276 of human AKT1S1 (NP_115751.3).

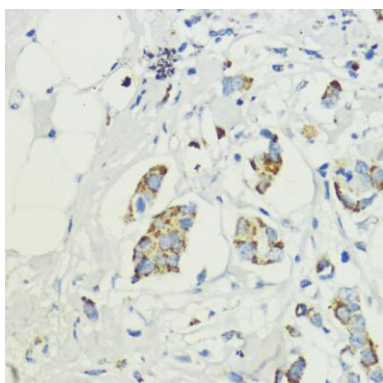
Storage:

Store at -20°C. Avoid freeze / thaw cycles. Buffer: PBS with 0.02% sodium azide, 50% glycerol, pH7.3.

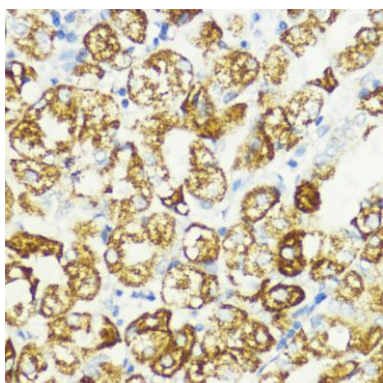
Product Images



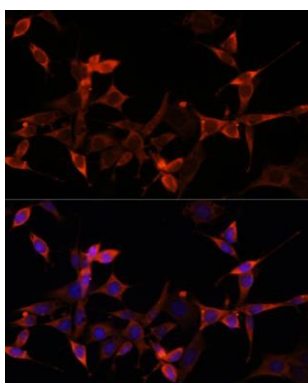
Western blot analysis of extracts of various cell lines, using AKT1S1 antibody (CAB6238) at 1:1000 dilution. Secondary antibody: HRP Goat Anti-Rabbit IgG (H+L) (CABS014) at 1:10000 dilution. Lysates/proteins: 25ug per lane. Blocking buffer: 3% nonfat dry milk in TBST. Detection: ECL Enhanced Kit (CABM00021). Exposure time: 90s.



Immunohistochemistry of paraffin-embedded human mammary cancer using AKT1S1 antibody (CAB6238) at dilution of 1:200 (40x lens).



Immunohistochemistry of paraffin-embedded human stomach using AKT1S1 antibody (CAB6238) at dilution of 1:200 (40x lens).



Immunofluorescence analysis of NIH-3T3 cells using AKT1S1 Polyclonal Antibody (CAB6238) at dilution of 1:100 (40x lens). Blue: DAPI for nuclear staining.