

ALKBH1 Rabbit Polyclonal Antibody



CAB6240

Product Information

Size:

20uL, 50uL, 100uL, 200uL

Observed MW:

44kDa

Calculated MW:

43kDa

Applications:

WB IP

Reactivity:

Human

Protein Background

This gene encodes a homolog to the E. coli alkB gene product. The E. coli alkB protein is part of the adaptive response mechanism of DNA alkylation damage repair. It is involved in damage reversal by oxidative demethylation of 1-methyladenine and 3-methylcytosine.

Immunogen information

Gene ID:

8846

Uniprot

Q13686

Synonyms:

ALKBH1; ABH; ABH1; ALKBH; alkB; hABH

Antibody Information

Recommended dilutions:

WB 1:500 - 1:2000 IP 1:50 - 1:200

Source:

Rabbit

Isotype:

IgG

Purification:

Affinity purification

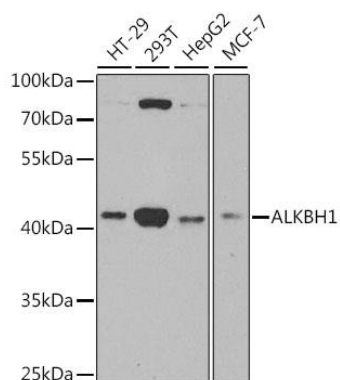
Immunogen:

Recombinant fusion protein containing a sequence corresponding to amino acids 110-389 of human ALKBH1 (NP_006011.2).

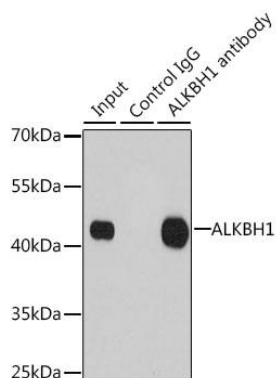
Storage:

Store at -20°C. Avoid freeze / thaw cycles. Buffer: PBS with 0.02% sodium azide, 50% glycerol, pH7.3.

Product Images



Western blot analysis of extracts of various cell lines, using ALKBH1 antibody (CAB6240) at 1:1000 dilution. Secondary antibody: HRP Goat Anti-Rabbit IgG (H+L) (CABS014) at 1:10000 dilution. Lysates/proteins: 25ug per lane. Blocking buffer: 3% nonfat dry milk in TBST. Detection: ECL Enhanced Kit (CABM00021). Exposure time: 30s.



Immunoprecipitation analysis of 200ug extracts of 293T cells using 1ug ALKBH1 antibody (CAB6240). Western blot was performed from the immunoprecipitate using ALKBH1 antibody (CAB6240) at a dilution of 1:1000.