

GAB1 Rabbit Polyclonal Antibody



CAB6248

Product Information

Size:

20uL, 50uL, 100uL, 200uL

Observed MW:

110kDa

Calculated MW:

76kDa/80kDa

Applications:

WB IHC IF

Reactivity:

Human, Mouse, Rat

Protein Background

The protein encoded by this gene is a member of the IRS1-like multisubstrate docking protein family. It is an important mediator of branching tubulogenesis and plays a central role in cellular growth response, transformation and apoptosis. Two transcript variants encoding different isoforms have been found for this gene.

Immunogen information

Gene ID:

2549

Uniprot

Q13480

Synonyms:

GAB1; GRB2

Antibody Information

Recommended dilutions:

WB 1:500 - 1:2000 IHC 1:50
- 1:200 IF 1:20 - 1:100

Source:

Rabbit

Isotype:

IgG

Purification:

Affinity purification

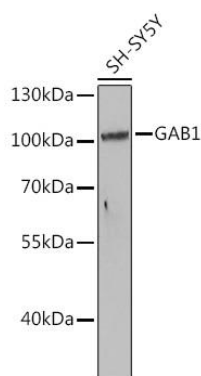
Immunogen:

Recombinant fusion protein containing a sequence corresponding to amino acids 485-724 of human GAB1 (NP_997006.1).

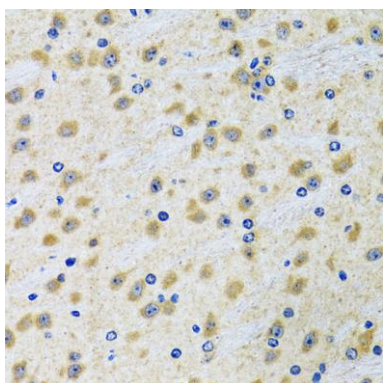
Storage:

Store at -20°C. Avoid freeze / thaw cycles. Buffer: PBS with 0.02% sodium azide, 50% glycerol, pH7.3.

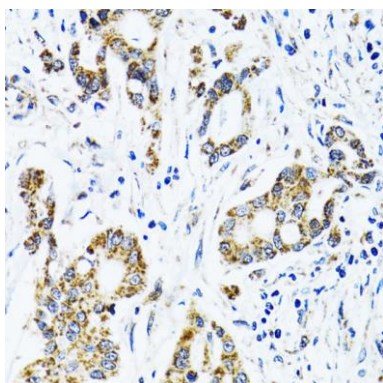
Product Images



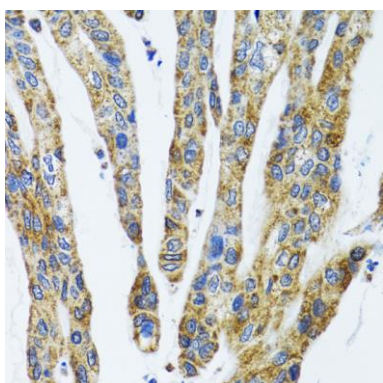
Western blot analysis of extracts of SH-SY5Y cells, using GAB1 antibody (CAB6248) at 1:1000 dilution. Secondary antibody: HRP Goat Anti-Rabbit IgG (H+L) (CABS014) at 1:10000 dilution. Lysates/proteins: 25ug per lane. Blocking buffer: 3% nonfat dry milk in TBST. Detection: ECL Basic Kit (CABM00020). Exposure time: 80s.



Immunohistochemistry of paraffin-embedded rat brain using GAB1 antibody (CAB6248) at dilution of 1:100 (40x lens).



Immunohistochemistry of paraffin-embedded human colon carcinoma using GAB1 antibody (CAB6248) at dilution of 1:100 (40x lens).



Immunohistochemistry of paraffin-embedded human gastric cancer using GAB1 antibody (CAB6248) at dilution of 1:100 (40x lens).