

ETV7 Rabbit Polyclonal Antibody



CAB6255

Product Information

Size:

20uL, 50uL, 100uL, 200uL

Observed MW:

37kDa

Calculated MW:

22kDa/29kDa/30kDa/32kDa/
36kDa/38kDa

Applications:

WB

Reactivity:

Human

Protein Background

The protein encoded by this gene belongs to the ETS family of transcription factors, which is a large group of evolutionarily conserved transcriptional regulators that play an important role in a variety of cellular processes throughout development and differentiation, and are involved in oncogenesis as well. This protein is predominantly expressed in hematopoietic tissues. Several alternatively spliced transcript variants encoding different isoforms have been described for this gene (PMID:11108721).

Immunogen information

Gene ID:

51513

Uniprot

Q9Y603

Synonyms:

ETV7; TEL-2; TEL2; TELB

Antibody Information

Recommended dilutions:

WB 1:500 - 1:2000

Source:

Rabbit

Isotype:

IgG

Purification:

Affinity purification

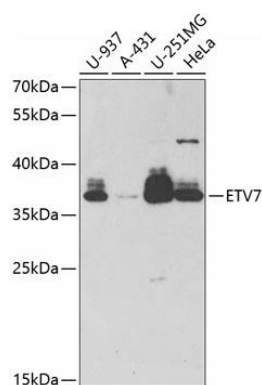
Immunogen:

Recombinant fusion protein containing a sequence corresponding to amino acids 1-210 of human ETV7 (NP_057219.1).

Storage:

Store at -20°C. Avoid freeze / thaw cycles. Buffer: PBS with 0.02% sodium azide, 50% glycerol, pH7.3.

Product Images



Western blot analysis of extracts of various cell lines, using ETV7 antibody (CAB6255) at 1:1000 dilution. Secondary antibody: HRP Goat Anti-Rabbit IgG (H+L) (CABS014) at 1:10000 dilution. Lysates/proteins: 25ug per lane. Blocking buffer: 3% nonfat dry milk in TBST. Detection: ECL Basic Kit (CABM00020). Exposure time: 60s.