

# HSD17B13 Rabbit Polyclonal Antibody



CAB6256

---

## Product Information

### Size:

20uL, 50uL, 100uL, 200uL

### Observed MW:

33kDa

### Calculated MW:

29kDa/33kDa

### Applications:

WB IHC

### Reactivity:

Human, Mouse, Rat

## Antibody Information

### Recommended dilutions:

WB 1:500 - 1:2000 IHC 1:50  
- 1:200

### Source:

Rabbit

### Isotype:

IgG

### Purification:

Affinity purification

## Protein Background

### Immunogen information

#### Gene ID:

345275

#### Uniprot

Q7Z5P4

#### Synonyms:

HSD17B13; HMFN0376; NIIL497; SCDR9; SDR16C3

#### Immunogen:

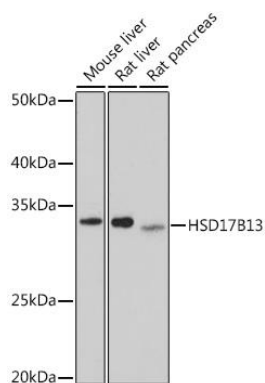
Recombinant fusion protein containing a sequence corresponding to amino acids 20-300 of human HSD17B13 (NP\_835236.2).

#### Storage:

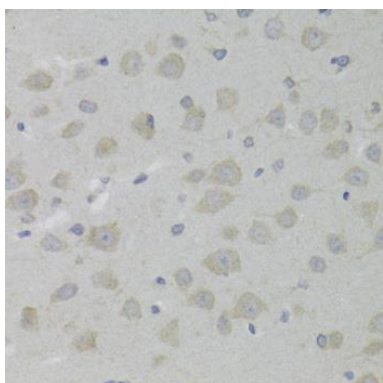
Store at -20°C. Avoid freeze / thaw cycles. Buffer: PBS with 0.02% sodium azide, 50% glycerol, pH7.3.

## Product Images

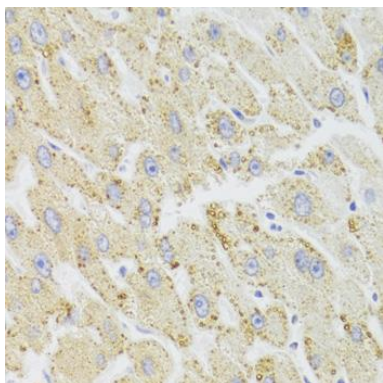
---



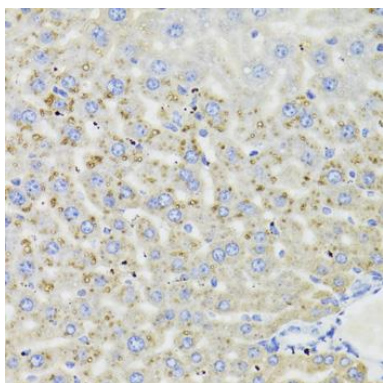
Western blot analysis of extracts of various cell lines, using HSD17B13 antibody (CAB6256) at 1:1000 dilution. Secondary antibody: HRP Goat Anti-Rabbit IgG (H+L) (CABS014) at 1:10000 dilution. Lysates/proteins: 25ug per lane. Blocking buffer: 3% nonfat dry milk in TBST. Detection: ECL Basic Kit (CABM00020). Exposure time: 180s.



Immunohistochemistry of paraffin-embedded rat brain using HSD17B13 Antibody (CAB6256) at dilution of 1:100 (40x lens).



Immunohistochemistry of paraffin-embedded human liver damage using HSD17B13 Antibody (CAB6256) at dilution of 1:100 (40x lens).



Immunohistochemistry of paraffin-embedded mouse liver using HSD17B13 Antibody (CAB6256) at dilution of 1:100 (40x lens).