

CHAF1B Rabbit Polyclonal Antibody



CAB6259

Product Information

Size:

20uL, 50uL, 100uL, 200uL

Observed MW:

70kDa

Calculated MW:

61kDa

Applications:

WB IHC IF

Reactivity:

Human, Mouse, Rat

Antibody Information

Recommended dilutions:

WB 1:500 - 1:2000 IHC 1:50
- 1:200 IF 1:20 - 1:100

Source:

Rabbit

Isotype:

IgG

Purification:

Affinity purification

Protein Background

Chromatin assembly factor I (CAF-I) is required for the assembly of histone octamers onto newly-replicated DNA. CAF-I is composed of three protein subunits, p50, p60, and p150. The protein encoded by this gene corresponds to the p60 subunit and is required for chromatin assembly after replication. The encoded protein is differentially phosphorylated in a cell cycle-dependent manner. In addition, it is normally found in the nucleus except during mitosis, when it is released into the cytoplasm. This protein is a member of the WD-repeat HIR1 family and may also be involved in DNA repair.

Immunogen information

Gene ID:

8208

Uniprot

Q13112

Synonyms:

CHAF1B; CAF-1; CAF-IP60; CAF1; CAF1A; CAF1P60; MPHOSPH7;
MPP7

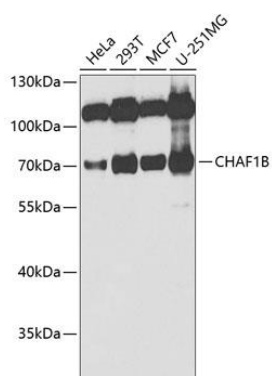
Immunogen:

Recombinant fusion protein containing a sequence corresponding to amino acids 270-559 of human CHAF1B (NP_005432.1).

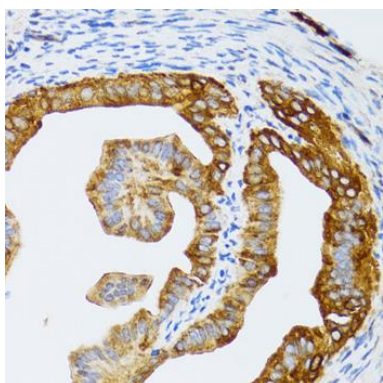
Storage:

Store at -20°C. Avoid freeze / thaw cycles. Buffer: PBS with 0.02% sodium azide, 50% glycerol, pH7.3.

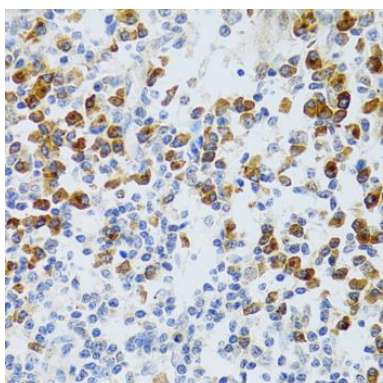
Product Images



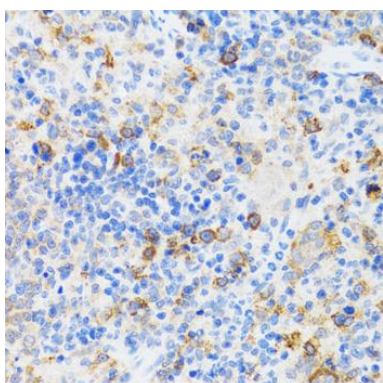
Western blot analysis of extracts of various cell lines, using CHAF1B antibody (CAB6259) at 1:1000 dilution. Secondary antibody: HRP Goat Anti-Rabbit IgG (H+L) (CABS014) at 1:10000 dilution. Lysates/proteins: 25ug per lane. Blocking buffer: 3% nonfat dry milk in TBST. Detection: ECL Enhanced Kit (CABM00021). Exposure time: 30s.



Immunohistochemistry of paraffin-embedded rat fallopian tube using CHAF1B antibody (CAB6259) at dilution of 1:100 (40x lens).



Immunohistochemistry of paraffin-embedded human tonsil using CHAF1B antibody (CAB6259) at dilution of 1:100 (40x lens).



Immunohistochemistry of paraffin-embedded mouse spleen using CHAF1B antibody (CAB6259) at dilution of 1:100 (40x lens).