

# BNIP2 Rabbit Polyclonal Antibody



CAB6282

---

## Product Information

### Size:

20uL, 50uL, 100uL, 200uL

### Observed MW:

45-55kDa

### Calculated MW:

36kDa/43kDa

### Applications:

WB IF

### Reactivity:

Human, Mouse

## Protein Background

This gene is a member of the BCL2/adenovirus E1B 19 kd-interacting protein (BNIP) family. It interacts with the E1B 19 kDa protein, which protects cells from virally-induced cell death. The encoded protein also interacts with E1B 19 kDa-like sequences of BCL2, another apoptotic protector. Alternate splicing results in multiple transcript variants.

## Immunogen information

### Gene ID:

663

### Uniprot

Q12982

### Synonyms:

BNIP2; BNIP-2; NIP2

## Antibody Information

### Recommended dilutions:

WB 1:500 - 1:2000 IF 1:10 - 1:100

### Source:

Rabbit

### Isotype:

IgG

### Purification:

Affinity purification

### Immunogen:

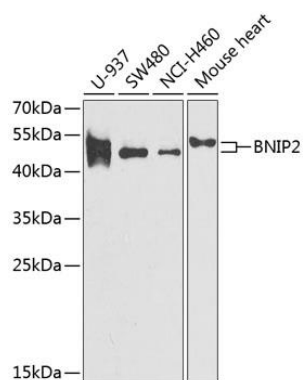
Recombinant fusion protein containing a sequence corresponding to amino acids 125-280 of human BNIP2 (NP\_004321.2).

### Storage:

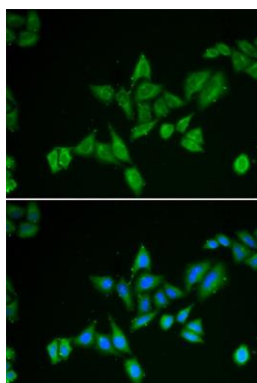
Store at -20°C. Avoid freeze / thaw cycles. Buffer: PBS with 0.02% sodium azide, 50% glycerol, pH7.3.

## Product Images

---



Western blot analysis of extracts of various cell lines, using BNIP2 antibody (CAB6282) at 1:1000 dilution. Secondary antibody: HRP Goat Anti-Rabbit IgG (H+L) (CABS014) at 1:10000 dilution. Lysates/proteins: 25ug per lane. Blocking buffer: 3% nonfat dry milk in TBST. Detection: ECL Enhanced Kit (CABM00021). Exposure time: 90s.



Immunofluorescence analysis of HeLa cells using BNIP2 antibody (CAB6282). Blue: DAPI for nuclear staining.