

BNIP3L Rabbit Polyclonal Antibody



CAB6283

Product Information

Size:

20uL, 50uL, 100uL, 200uL

Observed MW:

30kDa/45kDa

Calculated MW:

19kDa/23kDa

Applications:

WB IHC

Reactivity:

Human, Mouse, Rat

Protein Background

This gene encodes a protein that belongs to the pro-apoptotic subfamily within the Bcl-2 family of proteins. The encoded protein binds to Bcl-2 and possesses the BH3 domain. The protein directly targets mitochondria and causes apoptotic changes, including loss of membrane potential and the release of cytochrome c.

Immunogen information

Gene ID:

665

Uniprot

O60238

Synonyms:

BNIP3L; BNIP3a; NIX

Antibody Information

Recommended dilutions:

WB 1:500 - 1:2000 IHC 1:50
- 1:200

Source:

Rabbit

Isotype:

IgG

Purification:

Affinity purification

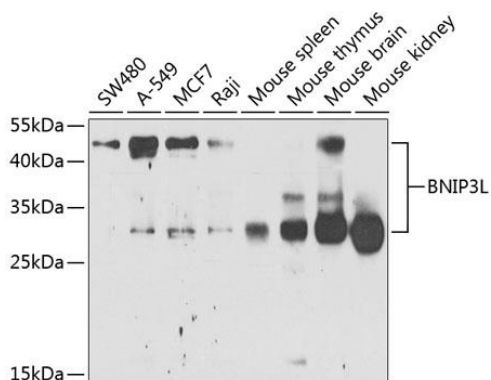
Immunogen:

Recombinant fusion protein containing a sequence corresponding to amino acids 1-187 of human BNIP3L (NP_004322.1).

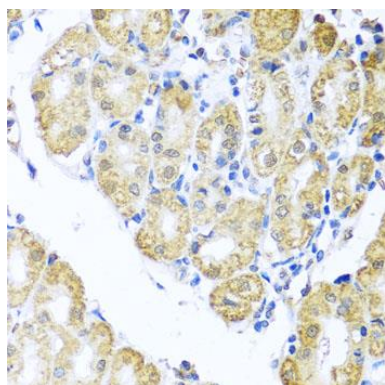
Storage:

Store at -20°C. Avoid freeze / thaw cycles. Buffer: PBS with 0.02% sodium azide, 50% glycerol, pH7.3.

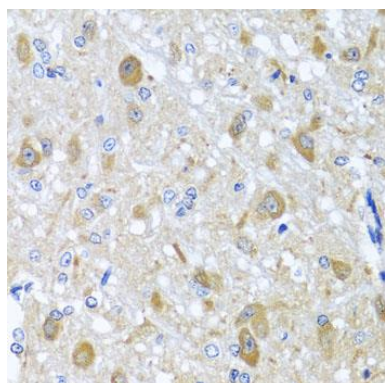
Product Images



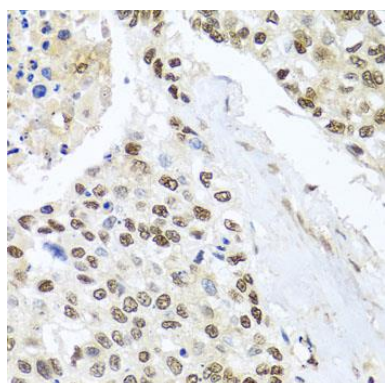
Western blot analysis of extracts of various cell lines, using BNIP3L antibody (CAB6283) at 1:1000 dilution. Secondary antibody: HRP Goat Anti-Rabbit IgG (H+L) (CABS014) at 1:10000 dilution. Lysates/proteins: 25ug per lane. Blocking buffer: 3% nonfat dry milk in TBST. Detection: ECL Enhanced Kit (CABM00021). Exposure time: 30s.



Immunohistochemistry of paraffin-embedded human stomach using BNIP3L antibody (CAB6283) at dilution of 1:100 (40x lens).



Immunohistochemistry of paraffin-embedded rat brain using BNIP3L antibody (CAB6283) at dilution of 1:100 (40x lens).



Immunohistochemistry of paraffin-embedded human lung cancer using BNIP3L antibody (CAB6283) at dilution of 1:100 (40x lens).