

BTD Rabbit Polyclonal Antibody



CAB6284

Product Information

Size:

20uL, 50uL, 100uL, 200uL

Observed MW:

61kDa

Calculated MW:

58kDa/61kDa

Applications:

WB IHC

Reactivity:

Human, Mouse, Rat

Antibody Information

Recommended dilutions:

WB 1:500 - 1:2000 IHC
1:100 - 1:200

Source:

Rabbit

Isotype:

IgG

Purification:

Affinity purification

Protein Background

The protein encoded by this gene functions to recycle protein-bound biotin by cleaving biocytin (biotin-epsilon-lysine), a normal product of carboxylase degradation, resulting in regeneration of free biotin. The encoded protein has also been shown to have biotinyl transferase activity. Mutations in this gene are associated with biotinidase deficiency. Multiple transcript variants encoding different isoforms have been described.

Immunogen information

Gene ID:

686

Uniprot

P43251

Synonyms:

BTD

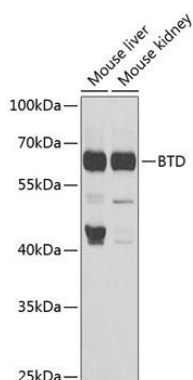
Immunogen:

Recombinant fusion protein containing a sequence corresponding to amino acids 284-543 of human BTD (NP_000051.1).

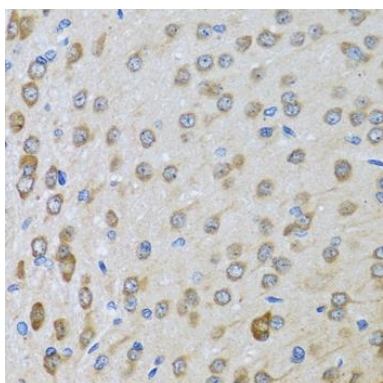
Storage:

Store at -20°C. Avoid freeze / thaw cycles. Buffer: PBS with 0.02% sodium azide, 50% glycerol, pH7.3.

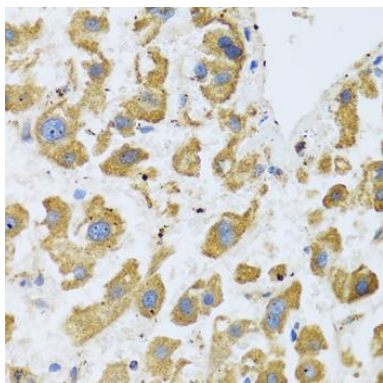
Product Images



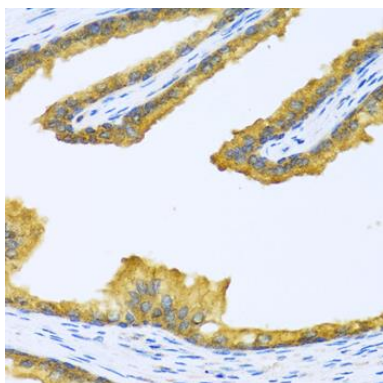
Western blot analysis of extracts of various cell lines, using BT-D antibody (CAB6284) at 1:1000 dilution. Secondary antibody: HRP Goat Anti-Rabbit IgG (H+L) (CABS014) at 1:10000 dilution. Lysates/proteins: 25ug per lane. Blocking buffer: 3% nonfat dry milk in TBST. Detection: ECL Enhanced Kit (CABM00021). Exposure time: 90s.



Immunohistochemistry of paraffin-embedded rat brain using BT-D antibody (CAB6284) at dilution of 1:100 (40x lens).



Immunohistochemistry of paraffin-embedded human liver cancer using BT-D antibody (CAB6284) at dilution of 1:100 (40x lens).



Immunohistochemistry of paraffin-embedded human prostate using BT-D antibody (CAB6284) at dilution of 1:100 (40x lens).