

DPEP1 Rabbit Polyclonal Antibody



CAB6289

Product Information

Size:

20uL, 50uL, 100uL, 200uL

Observed MW:

46kDa

Calculated MW:

45kDa

Applications:

WB

Reactivity:

Human, Mouse

Protein Background

The protein encoded by this gene is a kidney membrane enzyme involved in the metabolism of glutathione and other similar proteins by dipeptide hydrolysis. The encoded protein is known to regulate leukotriene activity by catalyzing the conversion of leukotriene D4 to leukotriene E4. This protein uses zinc as a cofactor and acts as a disulfide-linked homodimer. Two transcript variants encoding the same protein have been found for this gene.

Immunogen information

Gene ID:

1800

Uniprot

P16444

Synonyms:

DPEP1; MBD1; MDP; RDP

Antibody Information

Recommended dilutions:

WB 1:500 - 1:2000

Source:

Rabbit

Isotype:

IgG

Purification:

Affinity purification

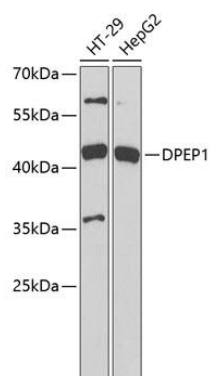
Immunogen:

Recombinant fusion protein containing a sequence corresponding to amino acids 17-385 of human DPEP1 (NP_001121613.1).

Storage:

Store at -20°C. Avoid freeze / thaw cycles. Buffer: PBS with 0.02% sodium azide, 50% glycerol, pH7.3.

Product Images



Western blot analysis of extracts of various cell lines, using DPEP1 antibody (CAB6289) at 1:1000 dilution. Secondary antibody: HRP Goat Anti-Rabbit IgG (H+L) (CABS014) at 1:10000 dilution. Lysates/proteins: 25ug per lane. Blocking buffer: 3% nonfat dry milk in TBST.