

MLANA Rabbit Polyclonal Antibody



CAB6290

Product Information

Size:

20uL, 50uL, 100uL, 200uL

Observed MW:

18kDa

Calculated MW:

13kDa

Applications:

WB IF

Reactivity:

Human, Mouse, Rat

Antibody Information

Recommended dilutions:

WB 1:500 - 1:2000 IF 1:50 - 1:200

Source:

Rabbit

Isotype:

IgG

Purification:

Affinity purification

Protein Background

Immunogen information

Gene ID:

2315

Uniprot

Q16655

Synonyms:

MLANA; MART-1; MART1; melan-A

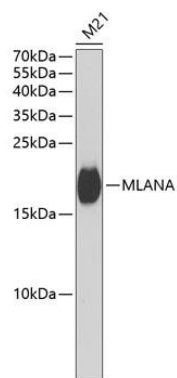
Immunogen:

Recombinant fusion protein containing a sequence corresponding to amino acids 48-118 of human MLANA (NP_005502.1).

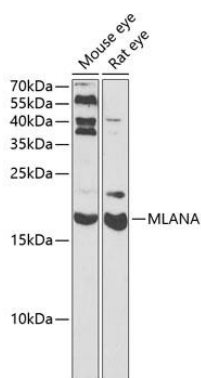
Storage:

Store at -20°C. Avoid freeze / thaw cycles. Buffer: PBS with 0.02% sodium azide, 50% glycerol, pH7.3.

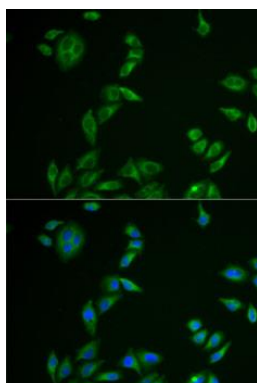
Product Images



Western blot analysis of extracts of M21 cells, using MLANA antibody (CAB6290) at 1:1000 dilution. Secondary antibody: HRP Goat Anti-Rabbit IgG (H+L) (CABS014) at 1:10000 dilution. Lysates/proteins: 25ug per lane. Blocking buffer: 3% nonfat dry milk in TBST. Detection: ECL Basic Kit (CABM00020). Exposure time: 90s.



Western blot analysis of extracts of various cell lines, using MLANA antibody (CAB6290) at 1:3000 dilution. Secondary antibody: HRP Goat Anti-Rabbit IgG (H+L) (CABS014) at 1:10000 dilution. Lysates/proteins: 25ug per lane. Blocking buffer: 3% nonfat dry milk in TBST. Detection: ECL Enhanced Kit (CABM00021). Exposure time: 60s.



Immunofluorescence analysis of U2OS cells using MLANA antibody (CAB6290). Blue: DAPI for nuclear staining.