

# GALT Rabbit Polyclonal Antibody



CAB6292

---

## Product Information

### Size:

20uL, 50uL, 100uL, 200uL

### Observed MW:

43kDa

### Calculated MW:

31kDa/43kDa

### Applications:

WB IHC

### Reactivity:

Human, Mouse, Rat

## Antibody Information

### Recommended dilutions:

WB 1:500 - 1:2000 IHC 1:50  
- 1:200

### Source:

Rabbit

### Isotype:

IgG

### Purification:

Affinity purification

## Protein Background

Galactose-1-phosphate uridyl transferase (GALT) catalyzes the second step of the Leloir pathway of galactose metabolism, namely the conversion of UDP-glucose + galactose-1-phosphate to glucose-1-phosphate + UDP-galactose. The absence of this enzyme results in classic galactosemia in humans and can be fatal in the newborn period if lactose is not removed from the diet. The pathophysiology of galactosemia has not been clearly defined. Two transcript variants encoding different isoforms have been found for this gene.

## Immunogen information

### Gene ID:

2592

### Uniprot

P07902

### Synonyms:

GALT

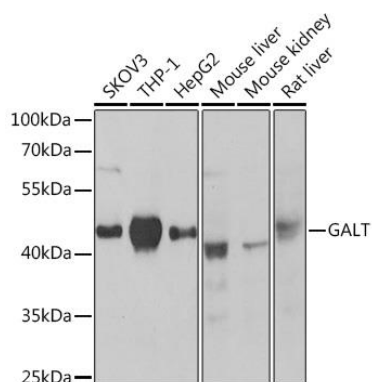
### Immunogen:

Recombinant fusion protein containing a sequence corresponding to amino acids 1-379 of human GALT (NP\_000146.2).

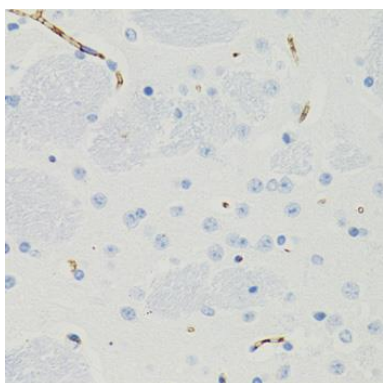
### Storage:

Store at -20°C. Avoid freeze / thaw cycles. Buffer: PBS with 0.02% sodium azide, 50% glycerol, pH7.3.

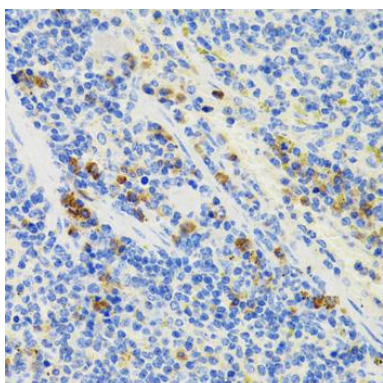
## Product Images



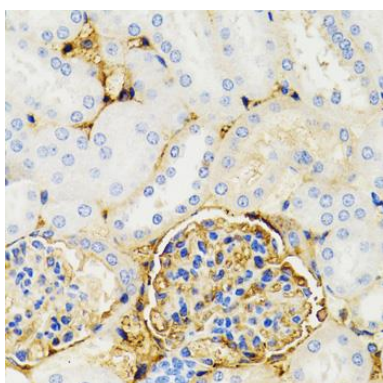
Western blot analysis of extracts of various cell lines, using GALT Rabbit pAb (CAB6292) at 1:1000 dilution. Secondary antibody: HRP Goat Anti-Rabbit IgG (H+L) (CABS014) at 1:10000 dilution. Lysates/proteins: 25ug per lane. Blocking buffer: 3% nonfat dry milk in TBST. Detection: ECL Basic Kit (CABM00020). Exposure time: 90s.



Immunohistochemistry of paraffin-embedded mouse brain using GALT antibody (CAB6292) at dilution of 1:100 (40x lens).



Immunohistochemistry of paraffin-embedded mouse spleen using GALT antibody (CAB6292) at dilution of 1:100 (40x lens).



Immunohistochemistry of paraffin-embedded mouse kidney using GALT antibody (CAB6292) at dilution of 1:100 (40x lens).