

# M6PR Rabbit Polyclonal Antibody



CAB6296

## Product Information

### Size:

20uL, 50uL, 100uL, 200uL

### Observed MW:

31kDa

### Calculated MW:

30kDa

### Applications:

WB IHC

### Reactivity:

Human, Mouse, Rat

## Protein Background

This gene encodes a member of the P-type lectin family. P-type lectins play a critical role in lysosome function through the specific transport of mannose-6-phosphate-containing acid hydrolases from the Golgi complex to lysosomes. The encoded protein functions as a homodimer and requires divalent cations for ligand binding. Alternatively spliced transcript variants encoding multiple isoforms have been observed for this gene. A pseudogene of this gene is located on the long arm of chromosome X.

## Immunogen information

### Gene ID:

4074

### Uniprot

P20645

### Synonyms:

M6PR; CD-M6PR; CD-MPR; MPR 46; MPR-46; MPR46; SMPR

## Antibody Information

### Recommended dilutions:

WB 1:500 - 1:2000 IHC 1:50 - 1:200

### Source:

Rabbit

### Isotype:

IgG

### Purification:

Affinity purification

### Immunogen:

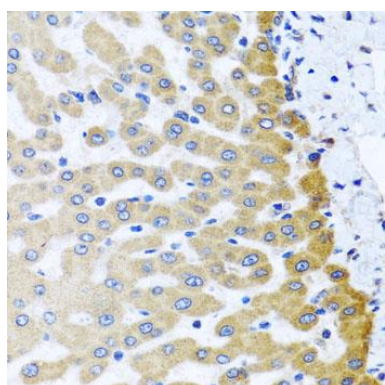
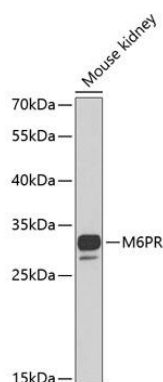
Recombinant fusion protein containing a sequence corresponding to amino acids 27-185 of human M6PR (NP\_002346.1).

### Storage:

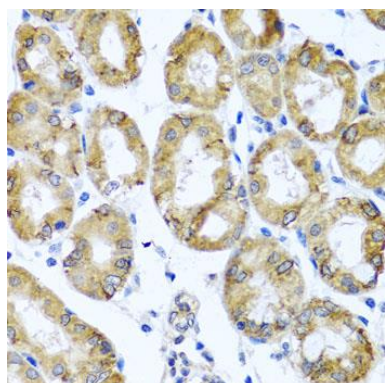
Store at -20°C. Avoid freeze / thaw cycles. Buffer: PBS with 0.02% sodium azide, 50% glycerol, pH7.3.

## Product Images

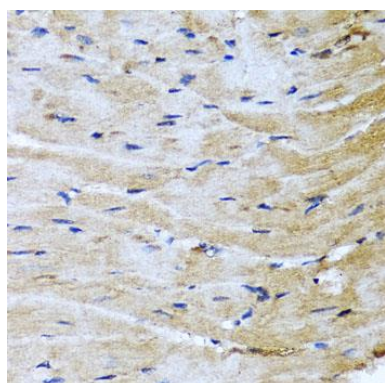
---



Immunohistochemistry of paraffin-embedded human liver damage using M6PR antibody (CAB6296) at dilution of 1:100 (40x lens).



Immunohistochemistry of paraffin-embedded human stomach using M6PR antibody (CAB6296) at dilution of 1:100 (40x lens).



Immunohistochemistry of paraffin-embedded mouse heart using M6PR antibody (CAB6296) at dilution of 1:100 (40x lens).