

MDH2 Rabbit Polyclonal Antibody



CAB6297

Product Information

Size:

20uL, 50uL, 100uL, 200uL

Observed MW:

35kDa

Calculated MW:

30kDa/35kDa

Applications:

WB IHC IF

Reactivity:

Human, Mouse, Rat

Protein Background

Malate dehydrogenase catalyzes the reversible oxidation of malate to oxaloacetate, utilizing the NAD/NADH cofactor system in the citric acid cycle. The protein encoded by this gene is localized to the mitochondria and may play pivotal roles in the malate-aspartate shuttle that operates in the metabolic coordination between cytosol and mitochondria. Several transcript variants encoding different isoforms have been found for this gene.

Immunogen information

Gene ID:

4191

Uniprot

P40926

Synonyms:

MDH2; EIEE51; M-MDH; MDH; MGC:3559; MOR1

Antibody Information

Recommended dilutions:

WB 1:500 - 1:2000 IHC 1:50
- 1:100 IF 1:50 - 1:100

Source:

Rabbit

Isotype:

IgG

Purification:

Affinity purification

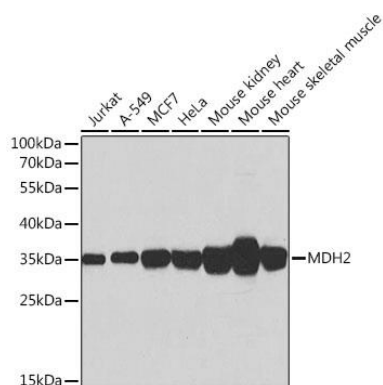
Immunogen:

Recombinant fusion protein containing a sequence corresponding to amino acids 59-338 of human MDH2 (NP_005909.2).

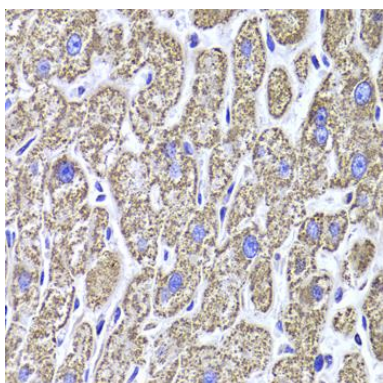
Storage:

Store at -20°C. Avoid freeze / thaw cycles. Buffer: PBS with 0.02% sodium azide, 50% glycerol, pH7.3.

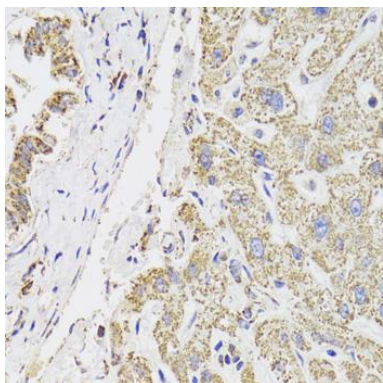
Product Images



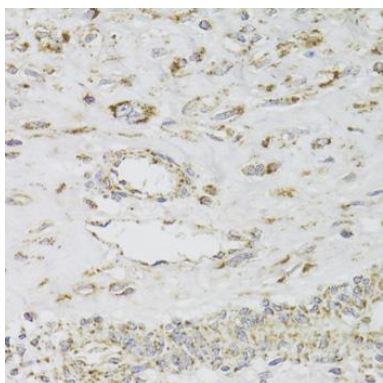
Western blot analysis of extracts of various cell lines, using MDH2 antibody (CAB6297) at 1:1000 dilution. Secondary antibody: HRP Goat Anti-Rabbit IgG (H+L) (CABS014) at 1:10000 dilution. Lysates/proteins: 25ug per lane. Blocking buffer: 3% nonfat dry milk in TBST. Detection: ECL Basic Kit (CABM00020). Exposure time: 1s.



Immunohistochemistry of paraffin-embedded human liver damage using MDH2 Antibody (CAB6297) at dilution of 1:100 (40x lens).



Immunohistochemistry of paraffin-embedded human liver damage using MDH2 Antibody (CAB6297) at dilution of 1:100 (40x lens).



Immunohistochemistry of paraffin-embedded human leiomyoma of uterus using MDH2 Antibody (CAB6297) at dilution of 1:100 (40x lens).