

# MPP1 Rabbit Polyclonal Antibody



CAB6298

## Product Information

### Size:

20uL, 50uL, 100uL, 200uL

### Observed MW:

52kDa

### Calculated MW:

49kDa/52kDa

### Applications:

WB

### Reactivity:

Human, Mouse

## Protein Background

This gene encodes the prototype of the membrane-associated guanylate kinase (MAGUK) family proteins. MAGUKs interact with the cytoskeleton and regulate cell proliferation, signaling pathways, and intercellular junctions. The encoded protein is an extensively palmitoylated membrane phosphoprotein containing a PDZ domain, a Src homology 3 (SH3) motif, and a guanylate kinase domain. This gene product interacts with various cytoskeletal proteins and cell junctional proteins in different tissue and cell types, and may be involved in the regulation of cell shape, hair cell development, neural patterning of the retina, and apico-basal polarity and tumor suppression pathways in non-erythroid cells. Multiple transcript variants encoding different isoforms have been found for this gene.

## Immunogen information

### Gene ID:

4354

### Uniprot

Q00013

## Antibody Information

### Recommended dilutions:

WB 1:500 - 1:2000

### Source:

Rabbit

### Isotype:

IgG

### Purification:

Affinity purification

### Synonyms:

MPP1; AAG12; DXS552E; EMP55; MRG1; PEMP

### Immunogen:

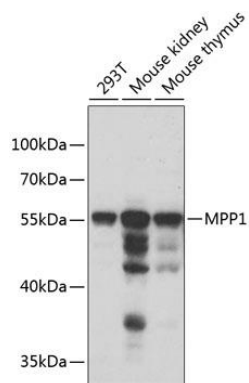
Recombinant fusion protein containing a sequence corresponding to amino acids 1-270 of human MPP1 (NP\_002427.1).

### Storage:

Store at -20°C. Avoid freeze / thaw cycles. Buffer: PBS with 0.02% sodium azide, 50% glycerol, pH7.3.

## Product Images

---



Western blot analysis of extracts of various cell lines, using MPP1 antibody (CAB6298) at 1:1000 dilution. Secondary antibody: HRP Goat Anti-Rabbit IgG (H+L) (CABS014) at 1:10000 dilution. Lysates/proteins: 25ug per lane. Blocking buffer: 3% nonfat dry milk in TBST. Detection: ECL Enhanced Kit (CABM00021). Exposure time: 60s.