

UBE2B Rabbit Polyclonal Antibody



CAB6315

Product Information

Size:

20uL, 50uL, 100uL, 200uL

Observed MW:

16kDa

Calculated MW:

17kDa

Applications:

WB IHC

Reactivity:

Human, Mouse, Rat

Protein Background

The modification of proteins with ubiquitin is an important cellular mechanism for targeting abnormal or short-lived proteins for degradation. Ubiquitination involves at least three classes of enzymes: ubiquitin-activating enzymes, or E1s, ubiquitin-conjugating enzymes, or E2s, and ubiquitin-protein ligases, or E3s. This gene encodes a member of the E2 ubiquitin-conjugating enzyme family. This enzyme is required for post-replicative DNA damage repair. Its protein sequence is 100% identical to the mouse, rat, and rabbit homologs, which indicates that this enzyme is highly conserved in eukaryotic evolution.

Immunogen information

Gene ID:

7320

Uniprot

P63146

Synonyms:

UBE2B; E2-17kDa; HHR6B; HR6B; RAD6B; UBC2

Antibody Information

Recommended dilutions:

WB 1:500 - 1:2000 IHC 1:50 - 1:200

Source:

Rabbit

Isotype:

IgG

Purification:

Affinity purification

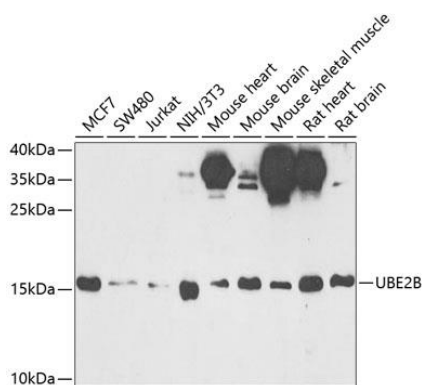
Immunogen:

Recombinant fusion protein containing a sequence corresponding to amino acids 1-152 of human UBE2B (NP_003328.1).

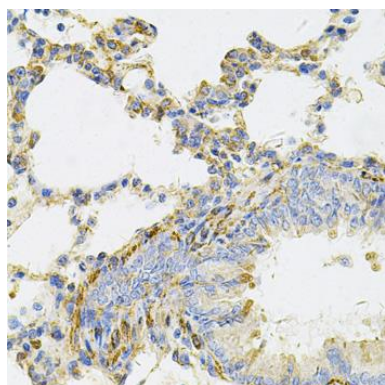
Storage:

Store at -20°C. Avoid freeze / thaw cycles. Buffer: PBS with 0.02% sodium azide, 50% glycerol, pH7.3.

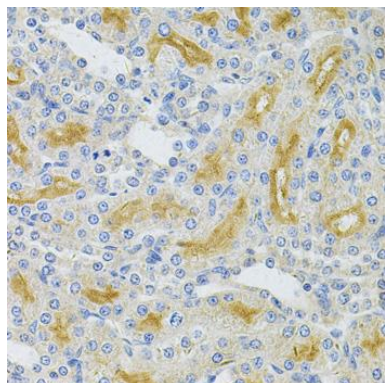
Product Images



Western blot analysis of extracts of various cell lines, using UBE2B antibody (CAB6315) at 1:1000 dilution. Secondary antibody: HRP Goat Anti-Rabbit IgG (H+L) (CABS014) at 1:10000 dilution. Lysates/proteins: 25ug per lane. Blocking buffer: 3% nonfat dry milk in TBST. Detection: ECL Enhanced Kit (CABM00021). Exposure time: 90s.



Immunohistochemistry of paraffin-embedded rat lung using UBE2B Antibody (CAB6315) at dilution of 1:100 (40x lens).



Immunohistochemistry of paraffin-embedded rat kidney using UBE2B Antibody (CAB6315) at dilution of 1:100 (40x lens).