

ZWINT Rabbit Polyclonal Antibody



CAB6328

Product Information

Size:

20uL, 50uL, 100uL, 200uL

Observed MW:

39kDa

Calculated MW:

25kDa/31kDa

Applications:

WB IF

Reactivity:

Human, Mouse, Rat

Antibody Information

Recommended dilutions:

WB 1:500 - 1:2000 IF 1:50 - 1:200

Source:

Rabbit

Isotype:

IgG

Purification:

Affinity purification

Protein Background

This gene encodes a protein that is clearly involved in kinetochore function although an exact role is not known. It interacts with ZW10, another kinetochore protein, possibly regulating the association between ZW10 and kinetochores. The encoded protein localizes to prophase kinetochores before ZW10 does and it remains detectable on the kinetochore until late anaphase. It has a uniform distribution in the cytoplasm of interphase cells. Alternatively spliced transcript variants encoding different isoforms have been found for this gene.

Immunogen information

Gene ID:

11130

Uniprot

O95229

Synonyms:

ZWINT; HZwint-1; KNTC2AP; SIP30; ZWINT1

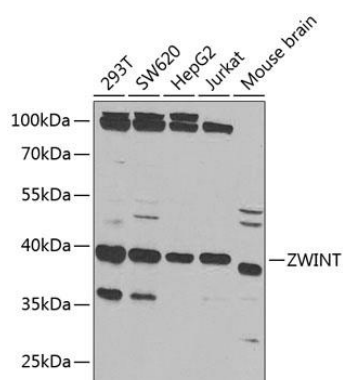
Immunogen:

Recombinant fusion protein containing a sequence corresponding to amino acids 1-277 of human ZWINT (NP_008988.2).

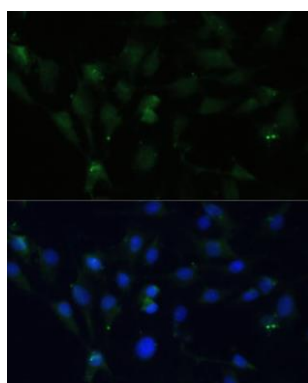
Storage:

Store at -20°C. Avoid freeze / thaw cycles. Buffer: PBS with 0.02% sodium azide, 50% glycerol, pH7.3.

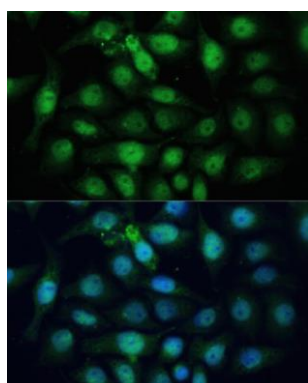
Product Images



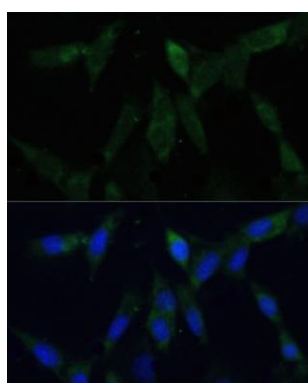
Western blot analysis of extracts of various cell lines, using ZWINT antibody (CAB6328) at 1:1000 dilution. Secondary antibody: HRP Goat Anti-Rabbit IgG (H+L) (CABS014) at 1:10000 dilution. Lysates/proteins: 25ug per lane. Blocking buffer: 3% nonfat dry milk in TBST.



Immunofluorescence analysis of C6 cells using ZWINT Polyclonal Antibody (CAB6328) at dilution of 1:100 (40x lens). Blue: DAPI for nuclear staining.



Immunofluorescence analysis of HeLa cells using ZWINT Polyclonal Antibody (CAB6328) at dilution of 1:100 (40x lens). Blue: DAPI for nuclear staining.



Immunofluorescence analysis of NIH-3T3 cells using ZWINT Polyclonal Antibody (CAB6328) at dilution of 1:100 (40x lens). Blue: DAPI for nuclear staining.