

PHF21A Rabbit Polyclonal Antibody



CAB6330

Product Information

Size:

20uL, 50uL, 100uL, 200uL

Observed MW:

70-80kDa

Calculated MW:

70kDa/74kDa

Applications:

WB

Reactivity:

Human, Mouse, Rat

Antibody Information

Recommended dilutions:

WB 1:500 - 1:2000

Source:

Rabbit

Isotype:

IgG

Purification:

Affinity purification

Protein Background

Immunogen information

Gene ID:

51317

Uniprot

Q96BD5

Synonyms:

PHF21A; BHC80; BM-006

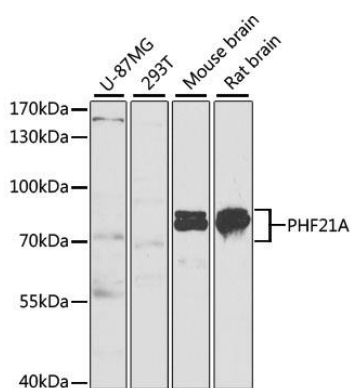
Immunogen:

Recombinant fusion protein containing a sequence corresponding to amino acids 461-680 of human PHF21A (NP_001095272.1).

Storage:

Store at -20°C. Avoid freeze / thaw cycles. Buffer: PBS with 0.02% sodium azide, 50% glycerol, pH7.3.

Product Images



Western blot analysis of extracts of various cell lines, using PHF21A antibody (CAB6330) at 1:1000 dilution. Secondary antibody: HRP Goat Anti-Rabbit IgG (H+L) (CABS014) at 1:10000 dilution. Lysates/proteins: 25ug per lane. Blocking buffer: 3% nonfat dry milk in TBST. Detection: ECL Basic Kit (CABM00020). Exposure time: 90s.