

PDP1 Rabbit Polyclonal Antibody



CAB6332

Product Information

Size:

20uL, 50uL, 100uL, 200uL

Observed MW:

55kDa

Calculated MW:

61kDa/63kDa

Applications:

WB IHC IF

Reactivity:

Human, Mouse, Rat

Antibody Information

Recommended dilutions:

WB 1:500 - 1:2000 IHC 1:50
- 1:200 IF 1:50 - 1:200

Source:

Rabbit

Isotype:

IgG

Purification:

Affinity purification

Protein Background

Pyruvate dehydrogenase (E1) is one of the three components (E1, E2, and E3) of the large pyruvate dehydrogenase complex. Pyruvate dehydrogenase kinases catalyze phosphorylation of serine residues of E1 to inactivate the E1 component and inhibit the complex. Pyruvate dehydrogenase phosphatases catalyze the dephosphorylation and activation of the E1 component to reverse the effects of pyruvate dehydrogenase kinases. Pyruvate dehydrogenase phosphatase is a heterodimer consisting of catalytic and regulatory subunits. Two catalytic subunits have been reported; one is predominantly expressed in skeletal muscle and another one is much more abundant in the liver. The catalytic subunit, encoded by this gene, is the former, and belongs to the protein phosphatase 2C (PP2C) superfamily. Along with the pyruvate dehydrogenase complex and pyruvate dehydrogenase kinases, this enzyme is located in the mitochondrial matrix. Mutation in this gene causes pyruvate dehydrogenase phosphatase deficiency. Multiple alternatively spliced transcript variants encoding different isoforms have been identified.

Immunogen information

Gene ID:

54704

Uniprot

Q9P0J1

Synonyms:

PDP1; PDH; PDP; PDPC; PPM2A; PPM2C

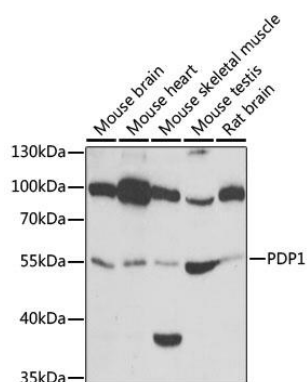
Immunogen:

Recombinant fusion protein containing a sequence corresponding to amino acids 278-537 of human PDP1 (NP_060914.2).

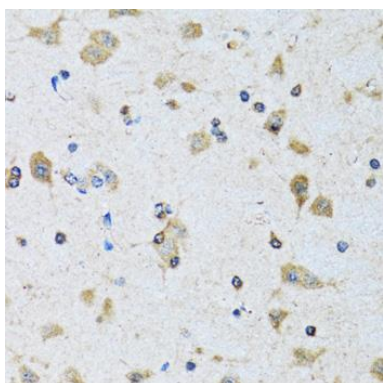
Storage:

Store at -20°C. Avoid freeze / thaw cycles. Buffer: PBS with 0.02% sodium azide, 50% glycerol, pH7.3.

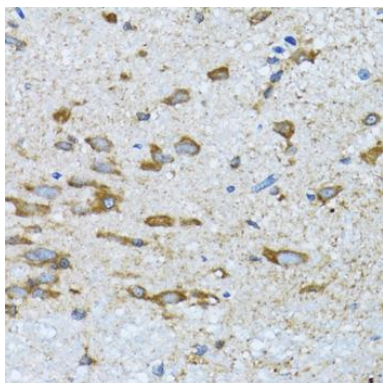
Product Images



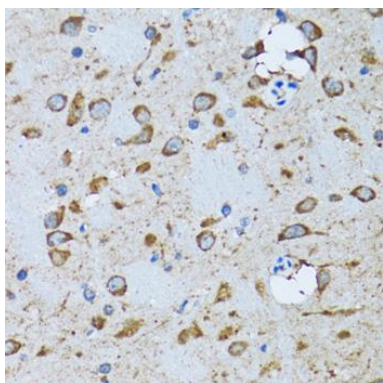
Western blot analysis of extracts of various cell lines, using PDP1 antibody (CAB6332) at 1:1000 dilution. Secondary antibody: HRP Goat Anti-Rabbit IgG (H+L) (CABS014) at 1:10000 dilution. Lysates/proteins: 25ug per lane. Blocking buffer: 3% nonfat dry milk in TBST. Detection: ECL Basic Kit (CABM00020). Exposure time: 30s.



Immunohistochemistry of paraffin-embedded rat brain using PDP1 antibody (CAB6332) at dilution of 1:100 (40x lens).



Immunohistochemistry of paraffin-embedded mouse spinal cord using PDP1 antibody (CAB6332) at dilution of 1:100 (40x lens).



Immunohistochemistry of paraffin-embedded mouse brain using PDP1 antibody (CAB6332) at dilution of 1:100 (40x lens).