

CCAR1 Rabbit Polyclonal Antibody



CAB6334

Product Information

Size:

20uL, 50uL, 100uL, 200uL

Observed MW:

132KDa

Calculated MW:

131kDa/132kDa

Applications:

WB IP

Reactivity:

Human, Mouse

Antibody Information

Recommended dilutions:

WB 1:500 - 1:2000 IP 1:50 - 1:100

Source:

Rabbit

Isotype:

IgG

Purification:

Affinity purification

Protein Background

Immunogen information

Gene ID:

55749

Uniprot

Q8IX12

Synonyms:

CCAR1

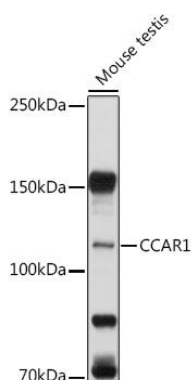
Immunogen:

Recombinant fusion protein containing a sequence corresponding to amino acids 1-200 of human CCAR1 (NP_060707.2).

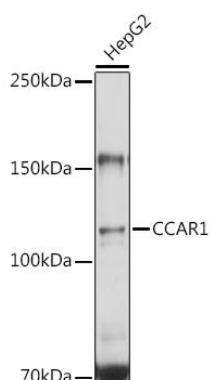
Storage:

Store at -20°C. Avoid freeze / thaw cycles. Buffer: PBS with 0.02% sodium azide, 50% glycerol, pH7.3.

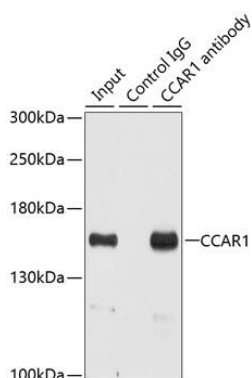
Product Images



Western blot analysis of extracts of Mouse testis, using CCAR1 antibody (CAB6334) at 1:1000 dilution. Secondary antibody: HRP Goat Anti-Rabbit IgG (H+L) (CABS014) at 1:10000 dilution. Lysates/proteins: 25ug per lane. Blocking buffer: 3% nonfat dry milk in TBST. Detection: ECL Enhanced Kit (RM00063). Exposure time: 5s.



Western blot analysis of extracts of HepG2 cells, using CCAR1 antibody (CAB6334) at 1:1000 dilution. Secondary antibody: HRP Goat Anti-Rabbit IgG (H+L) (CABS014) at 1:10000 dilution. Lysates/proteins: 25ug per lane. Blocking buffer: 3% nonfat dry milk in TBST. Detection: ECL Basic Kit (CABM00020). Exposure time: 10s.



Immunoprecipitation analysis of 200ug extracts of HeLa cells using 3ug CCAR1 antibody (CAB6334). Western blot was performed from the immunoprecipitate using CCAR1 antibody (CAB6334) at a dilution of 1:500.