

CIAPIN1 Rabbit Polyclonal Antibody



CAB6336

Product Information

Size:

20uL, 50uL, 100uL, 200uL

Observed MW:

39kDa

Calculated MW:

11kDa/32kDa/33kDa

Applications:

WB IHC IF IP

Reactivity:

Human, Mouse

Antibody Information

Recommended dilutions:

WB 1:500 - 1:2000 IHC 1:50
- 1:200 IF 1:50 - 1:200 IP
1:50 - 1:100

Source:

Rabbit

Isotype:

IgG

Purification:

Affinity purification

Protein Background

Immunogen information

Gene ID:

57019

Uniprot

Q6FI81

Synonyms:

CIAPIN1; Anamorsin; DRE2; PRO0915; anamorsin

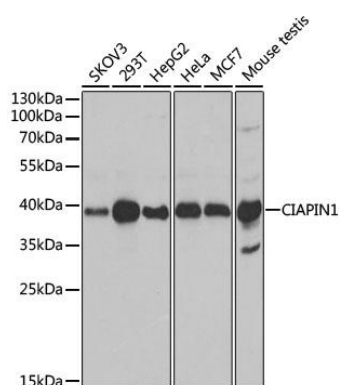
Immunogen:

Recombinant fusion protein containing a sequence corresponding to amino acids 1-312 of human CIAPIN1 (NP_064709.2).

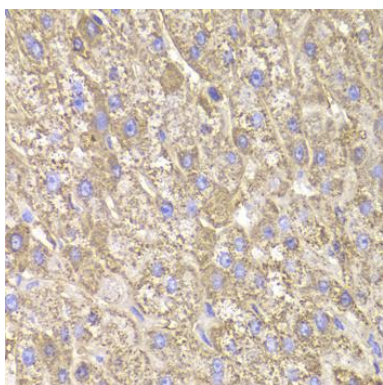
Storage:

Store at -20°C. Avoid freeze / thaw cycles. Buffer: PBS with 0.02% sodium azide, 50% glycerol, pH7.3.

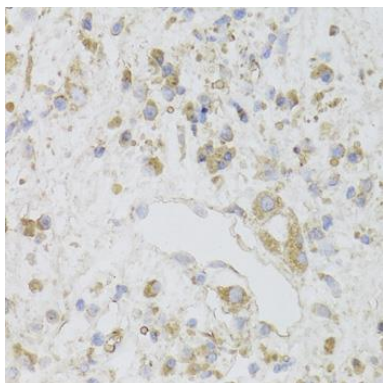
Product Images



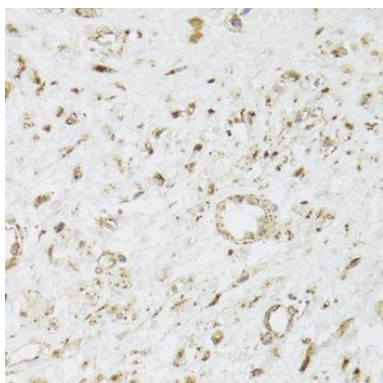
Western blot analysis of extracts of various cell lines, using CIAPIN1 antibody (CAB6336) at 1:1000 dilution. Secondary antibody: HRP Goat Anti-Rabbit IgG (H+L) (CABS014) at 1:10000 dilution. Lysates/proteins: 25ug per lane. Blocking buffer: 3% nonfat dry milk in TBST. Detection: ECL Basic Kit (CABM00020). Exposure time: 10s.



Immunohistochemistry of paraffin-embedded human liver damage using CIAPIN1 Antibody (CAB6336) at dilution of 1:100 (40x lens).



Immunohistochemistry of paraffin-embedded human gastric cancer using CIAPIN1 Antibody (CAB6336) at dilution of 1:100 (40x lens).



Immunohistochemistry of paraffin-embedded human leiomyoma of uterus using CIAPIN1 Antibody (CAB6336) at dilution of 1:100 (40x lens).