

PCGF1 Rabbit Polyclonal Antibody



CAB6338

Product Information

Size:

20uL, 50uL, 100uL, 200uL

Observed MW:

30kDa

Calculated MW:

20kDa/30kDa

Applications:

WB IF

Reactivity:

Human, Mouse

Antibody Information

Recommended dilutions:

WB 1:500 - 1:2000 IF 1:50 - 1:200

Source:

Rabbit

Isotype:

IgG

Purification:

Affinity purification

Protein Background

Immunogen information

Gene ID:

84759

Uniprot

Q9BSM1

Synonyms:

PCGF1; 2010002K04Rik; NSPC1; RNF3A-2; RNF68

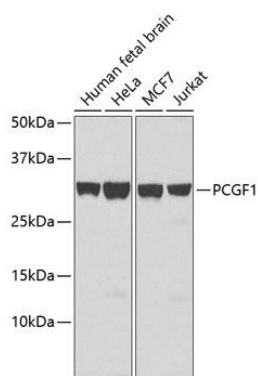
Immunogen:

Recombinant fusion protein containing a sequence corresponding to amino acids 20-259 of human PCGF1 (NP_116062.2).

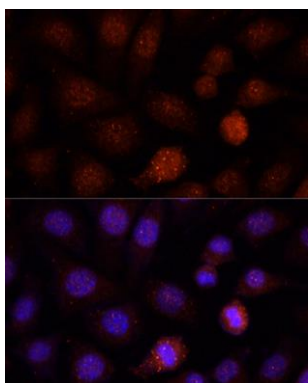
Storage:

Store at -20°C. Avoid freeze / thaw cycles. Buffer: PBS with 0.02% sodium azide, 50% glycerol, pH7.3.

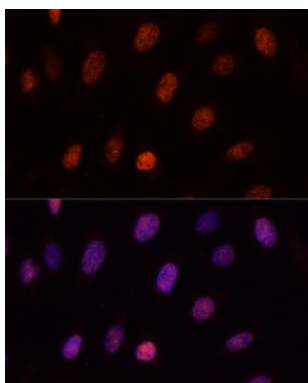
Product Images



Western blot analysis of extracts of various cell lines, using PCGF1 antibody (CAB6338). Secondary antibody: HRP Goat Anti-Rabbit IgG (H+L) (CABS014) at 1:10000 dilution. Lysates/proteins: 25ug per lane. Blocking buffer: 3% nonfat dry milk in TBST.



Immunofluorescence analysis of L-929 cells using PCGF1 antibody (CAB6338) at dilution of 1:100. Blue: DAPI for nuclear staining.



Immunofluorescence analysis of U-2OS cells using PCGF1 antibody (CAB6338) at dilution of 1:100. Blue: DAPI for nuclear staining.