

SYP Rabbit Polyclonal Antibody



CAB6344

Product Information

Size:

20uL, 50uL, 100uL, 200uL

Observed MW:

38kDa

Calculated MW:

20kDa/33kDa

Applications:

WB IHC IF IP

Reactivity:

Human, Mouse, Rat

Protein Background

This gene encodes an integral membrane protein of small synaptic vesicles in brain and endocrine cells. The protein also binds cholesterol and is thought to direct targeting of vesicle-associated membrane protein 2 (synaptobrevin) to intracellular compartments. Mutations in this gene are associated with X-linked mental retardation (XLMR).

Immunogen information

Gene ID:

6855

Uniprot

P08247

Synonyms:

MRX96; MRXSYP; SYP

Antibody Information

Recommended dilutions:

WB 1:500 - 1:2000 IHC 1:50

- 1:100 IF 1:50 - 1:200 IP

1:50 - 1:200

Source:

Rabbit

Immunogen:

A synthetic peptide corresponding to a sequence within amino acids 150-250 of human SYP (NP_003170.1).

Storage:

Store at -20°C. Avoid freeze / thaw cycles. Buffer: PBS with 0.02% sodium azide, 50% glycerol, pH7.3.

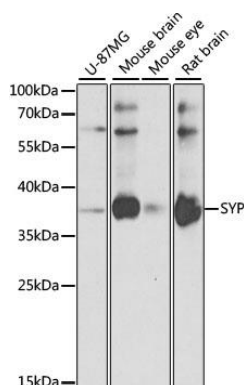
Isotype:

IgG

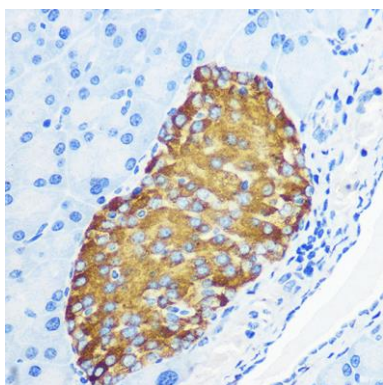
Purification:

Affinity purification

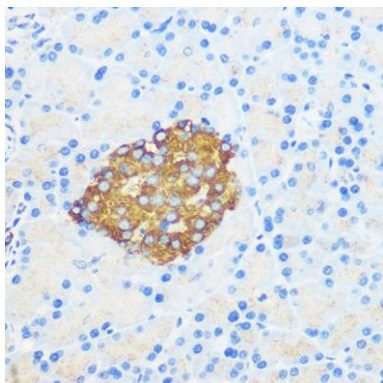
Product Images



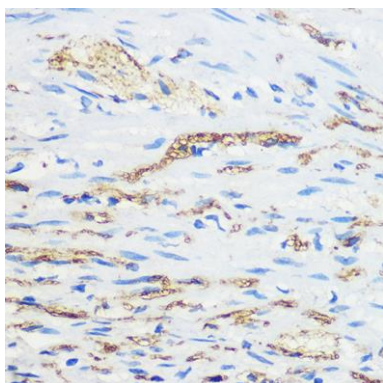
Western blot analysis of extracts of various cell lines, using SYP antibody (CAB6344) at 1:1000 dilution. Secondary antibody: HRP Goat Anti-Rabbit IgG (H+L) (CABS014) at 1:10000 dilution. Lysates/proteins: 25ug per lane. Blocking buffer: 3% nonfat dry milk in TBST. Detection: ECL Basic Kit (CABM00020). Exposure time: 20s.



Immunohistochemistry of paraffin-embedded mouse pancreas using SYP Rabbit pAb (CAB6344) at dilution of 100 (40x lens).



Immunohistochemistry of paraffin-embedded rat pancreas using SYP Rabbit pAb (CAB6344) at dilution of 100 (40x lens).



Immunohistochemistry of paraffin-embedded human appendix using SYP Rabbit pAb (CAB6344) at dilution of 100 (40x lens).