

# RCC1 Rabbit Polyclonal Antibody



CAB6350

---

## Product Information

### Size:

20uL, 50uL, 100uL, 200uL

### Observed MW:

45kDa

### Calculated MW:

44kDa/48kDa

### Applications:

WB IHC IF

### Reactivity:

Human, Mouse, Rat

## Antibody Information

### Recommended dilutions:

WB 1:1000 - 1:2000 IHC  
1:50 - 1:200 IF 1:50 - 1:200

### Source:

Rabbit

### Isotype:

IgG

### Purification:

Affinity purification

## Protein Background

### Immunogen information

#### Gene ID:

1104

#### Uniprot

P18754

#### Synonyms:

RCC1; CHC1; RCC1-I; SNHG3-RCC1

#### Immunogen:

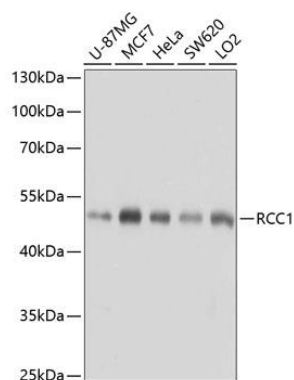
Recombinant fusion protein containing a sequence corresponding to amino acids 1-240 of human RCC1 (NP\_001260.1).

#### Storage:

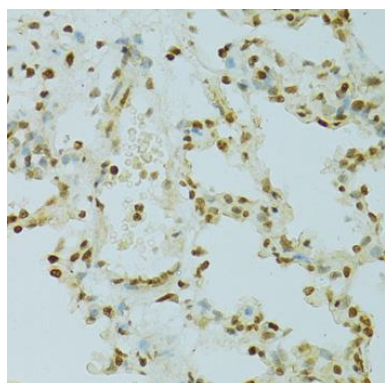
Store at -20°C. Avoid freeze / thaw cycles. Buffer: PBS with 0.02% sodium azide, 50% glycerol, pH7.3.

## Product Images

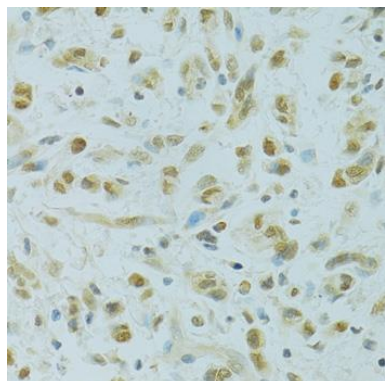
---



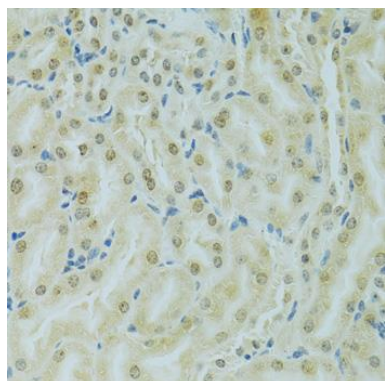
Western blot analysis of extracts of various cell lines, using RCC1 antibody (CAB6350) at 1:1000 dilution. Secondary antibody: HRP Goat Anti-Rabbit IgG (H+L) (CABS014) at 1:10000 dilution. Lysates/proteins: 25ug per lane. Blocking buffer: 3% nonfat dry milk in TBST. Detection: ECL Basic Kit (CABM00020). Exposure time: 5s.



Immunohistochemistry of paraffin-embedded rat lung using RCC1 antibody (CAB6350) at dilution of 1:100 (40x lens).



Immunohistochemistry of paraffin-embedded human gastric cancer using RCC1 antibody (CAB6350) at dilution of 1:100 (40x lens).



Immunohistochemistry of paraffin-embedded mouse kidney using RCC1 antibody (CAB6350) at dilution of 1:100 (40x lens).