

ALPP Rabbit Polyclonal Antibody



CAB6353

Product Information

Size:

20uL, 50uL, 100uL, 200uL

Observed MW:

70kDa

Calculated MW:

57kDa

Applications:

WB IHC IP

Reactivity:

Human

Protein Background

The protein encoded by this gene is an alkaline phosphatase, a metalloenzyme that catalyzes the hydrolysis of phosphoric acid monoesters. It belongs to a multigene family composed of four alkaline phosphatase isoenzymes. The enzyme functions as a homodimer and has a catalytic site containing one magnesium and two zinc ions, which are required for its enzymatic function. The protein is primarily expressed in placental and endometrial tissue; however, strong ectopic expression has been detected in ovarian adenocarcinoma, serous cystadenocarcinoma, and other ovarian cancer cells.

Immunogen information

Gene ID:

250

Uniprot

P05187

Synonyms:

ALPP; ALP; PALP; PLAP; PLAP-1; placental

Antibody Information

Recommended dilutions:

WB 1:500 - 1:2000 IHC 1:50
- 1:200 IP 1:50 - 1:100

Source:

Rabbit

Isotype:

IgG

Purification:

Affinity purification

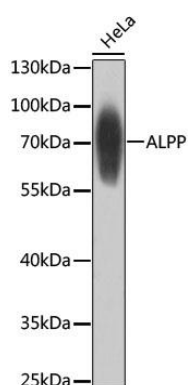
Immunogen:

Recombinant fusion protein containing a sequence corresponding to amino acids 260-460 of human ALPP (NP_001623.3).

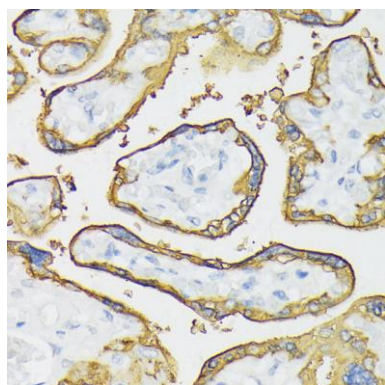
Storage:

Store at -20°C. Avoid freeze / thaw cycles. Buffer: PBS with 0.02% sodium azide, 50% glycerol, pH7.3.

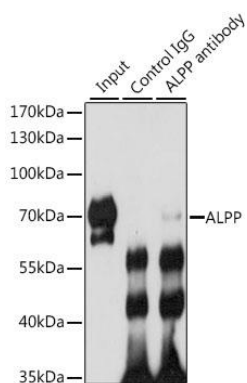
Product Images



Western blot analysis of extracts of HeLa cells, using ALPP antibody (CAB6353) at 1:1000 dilution. Secondary antibody: HRP Goat Anti-Rabbit IgG (H+L) (CABS014) at 1:10000 dilution. Lysates/proteins: 25ug per lane. Blocking buffer: 3% nonfat dry milk in TBST. Detection: ECL Basic Kit (CABM00020). Exposure time: 1s.



Immunohistochemistry of paraffin-embedded human placenta using ALPP antibody (CAB6353) at dilution of 1:100 (40x lens).



Immunoprecipitation analysis of 200ug extracts of HeLa cells, using 3 ug ALPP antibody (CAB6353). Western blot was performed from the immunoprecipitate using ALPP antibody (CAB6353) at a dilution of 1:1000.