

# ASL Rabbit Polyclonal Antibody



CAB6357

## Product Information

### Size:

20uL, 50uL, 100uL, 200uL

### Observed MW:

49kDa

### Calculated MW:

48kDa/49kDa/51kDa

### Applications:

WB IHC IF

### Reactivity:

Human, Mouse, Rat

## Antibody Information

### Recommended dilutions:

WB 1:500 - 1:2000 IHC 1:50  
- 1:200 IF 1:50 - 1:100

### Source:

Rabbit

### Isotype:

IgG

### Purification:

Affinity purification

## Protein Background

This gene encodes a member of the lyase 1 family. The encoded protein forms a cytosolic homotetramer and primarily catalyzes the reversible hydrolytic cleavage of argininosuccinate into arginine and fumarate, an essential step in the liver in detoxifying ammonia via the urea cycle. Mutations in this gene result in the autosomal recessive disorder argininosuccinic aciduria, or argininosuccinic acid lyase deficiency. A nontranscribed pseudogene is also located on the long arm of chromosome 22. Alternatively spliced transcript variants encoding different isoforms have been described.

## Immunogen information

### Gene ID:

435

### Uniprot

P04424

### Synonyms:

ASL; ASAL

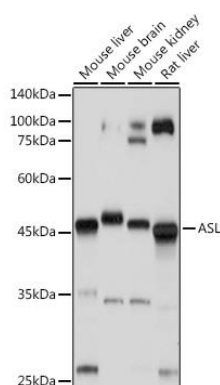
### Immunogen:

Recombinant fusion protein containing a sequence corresponding to amino acids 1-300 of human ASL (NP\_000039.2).

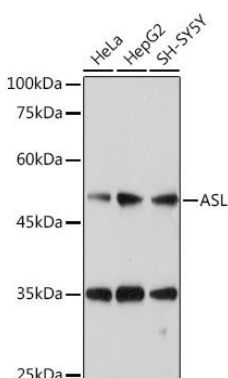
### Storage:

Store at -20°C. Avoid freeze / thaw cycles. Buffer: PBS with 0.02% sodium azide, 50% glycerol, pH7.3.

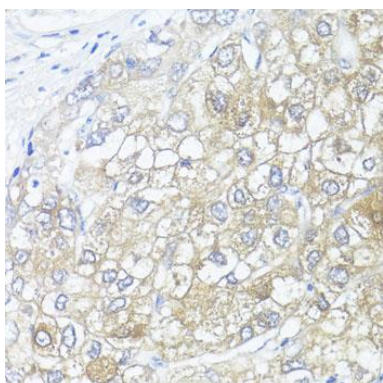
## Product Images



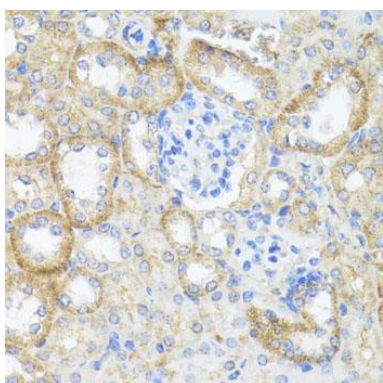
Western blot analysis of extracts of various cell lines, using ASL antibody (CAB6357) at 1:1000 dilution. Secondary antibody: HRP Goat Anti-Rabbit IgG (H+L) (CABS014) at 1:10000 dilution. Lysates/proteins: 25ug per lane. Blocking buffer: 3% nonfat dry milk in TBST. Detection: ECL Basic Kit (CABM00020). Exposure time: 1s.



Immunohistochemistry of paraffin-embedded human liver cancer using ASL antibody (CAB6357) at dilution of 1:100 (40x lens).



Immunohistochemistry of paraffin-embedded mouse kidney using ASL antibody (CAB6357) at dilution of 1:100 (40x lens).



Immunofluorescence analysis of NIH-3T3 cells using ASL Rabbit pAb (CAB6357) at dilution of 1:100 (40x lens). Blue: DAPI for nuclear staining.