

# C1R Rabbit Polyclonal Antibody



**CAB6360**

---

## Product Information

### Size:

20uL, 50uL, 100uL, 200uL

### Observed MW:

80kDa

### Calculated MW:

80kDa

### Applications:

WB IF

### Reactivity:

Human, Mouse, Rat

## Antibody Information

### Recommended dilutions:

WB 1:500 - 1:2000 IF 1:50 - 1:200

### Source:

Rabbit

### Isotype:

IgG

### Purification:

Affinity purification

## Protein Background

### Immunogen information

#### Gene ID:

715

#### Uniprot

P00736

#### Synonyms:

C1R; EDSPD1

#### Immunogen:

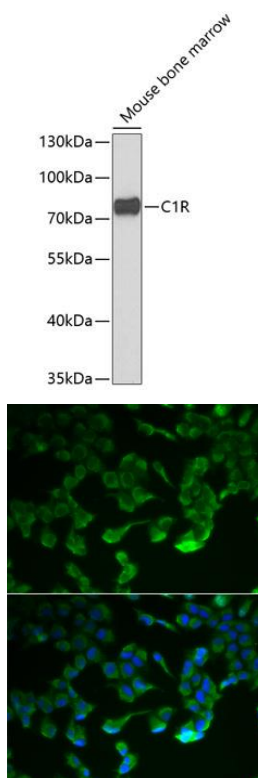
Recombinant fusion protein containing a sequence corresponding to amino acids 466-705 of human C1R (NP\_001724.3).

#### Storage:

Store at -20°C. Avoid freeze / thaw cycles. Buffer: PBS with 0.02% sodium azide, 50% glycerol, pH7.3.

## Product Images

---



Western blot analysis of extracts of mouse bone marrow, using C1R antibody (CAB6360) at 1:1000 dilution. Secondary antibody: HRP Goat Anti-Rabbit IgG (H+L) (CABS014) at 1:10000 dilution. Lysates/proteins: 25ug per lane. Blocking buffer: 3% nonfat dry milk in TBST. Detection: ECL Enhanced Kit (CABM00021). Exposure time: 90s.

Immunofluorescence analysis of HeLa cells using C1R antibody (CAB6360). Blue: DAPI for nuclear staining.