

SLC26A2 Rabbit Polyclonal Antibody



CAB6369

Product Information

Size:

20uL, 50uL, 100uL, 200uL

Observed MW:

Refer to Figures

Calculated MW:

81kDa

Applications:

IF

Reactivity:

Human

Protein Background

The diastrophic dysplasia sulfate transporter is a transmembrane glycoprotein implicated in the pathogenesis of several human chondrodysplasias. It apparently is critical in cartilage for sulfation of proteoglycans and matrix organization.

Immunogen information

Gene ID:

1836

Uniprot

P50443

Synonyms:

SLC26A2; D5S1708; DTD; DTDST; EDM4; MST153; MSTP157

Antibody Information

Recommended dilutions:

IF 1:50 - 1:100

Source:

Rabbit

Isotype:

IgG

Purification:

Affinity purification

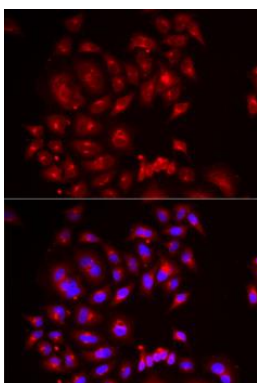
Immunogen:

Recombinant fusion protein containing a sequence corresponding to amino acids 540-739 of human SLC26A2 (NP_000103.2).

Storage:

Store at -20°C. Avoid freeze / thaw cycles. Buffer: PBS with 0.02% sodium azide, 50% glycerol, pH7.3.

Product Images



Immunofluorescence analysis of MCF7 cells using SLC26A2 antibody (CAB6369). Blue: DAPI for nuclear staining.