

IREB2 Rabbit Polyclonal Antibody



CAB6382

Product Information

Size:

20uL, 50uL, 100uL, 200uL

Observed MW:

105kDa

Calculated MW:

37kDa/105kDa

Applications:

WB IF

Reactivity:

Human, Mouse, Rat

Antibody Information

Recommended dilutions:

WB 1:500 - 1:2000 IF 1:20 - 1:50

Source:

Rabbit

Isotype:

IgG

Purification:

Affinity purification

Protein Background

Immunogen information

Gene ID:

3658

Uniprot

P48200

Synonyms:

IREB2; ACO3; IRP2; IRP2AD

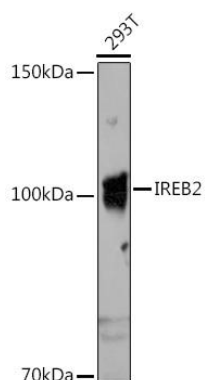
Immunogen:

Recombinant fusion protein containing a sequence corresponding to amino acids 1-250 of human IREB2 (NP_004127.1).

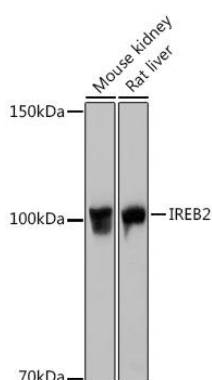
Storage:

Store at -20°C. Avoid freeze / thaw cycles. Buffer: PBS with 0.02% sodium azide, 50% glycerol, pH7.3.

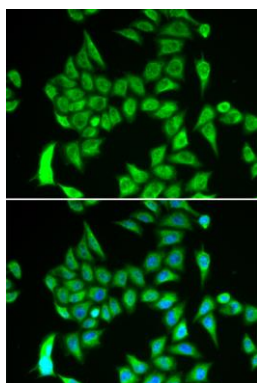
Product Images



Western blot analysis of extracts of 293T cells, using IREB2 antibody (CAB6382) at 1:1000 dilution. Secondary antibody: HRP Goat Anti-Rabbit IgG (H+L) (CABS014) at 1:10000 dilution. Lysates/proteins: 25ug per lane. Blocking buffer: 3% nonfat dry milk in TBST. Detection: ECL Basic Kit (CABM00020). Exposure time: 3s.



Western blot analysis of extracts of various cell lines, using IREB2 antibody (CAB6382) at 1:1000 dilution. Secondary antibody: HRP Goat Anti-Rabbit IgG (H+L) (CABS014) at 1:10000 dilution. Lysates/proteins: 25ug per lane. Blocking buffer: 3% nonfat dry milk in TBST. Detection: ECL Basic Kit (CABM00020). Exposure time: 1s.



Immunofluorescence analysis of A549 cells using IREB2 antibody (CAB6382). Blue: DAPI for nuclear staining.