

LIMS1 Rabbit Polyclonal Antibody



CAB6384

Product Information

Size:

20uL, 50uL, 100uL, 200uL

Observed MW:

40kDa

Calculated MW:

37kDa/38kDa/41kDa/44kDa

Applications:

WB IHC IF

Reactivity:

Human, Mouse, Rat

Antibody Information

Recommended dilutions:

WB 1:500 - 1:2000 IHC 1:50
- 1:200 IF 1:50 - 1:100

Source:

Rabbit

Isotype:

IgG

Purification:

Affinity purification

Protein Background

The protein encoded by this gene is an adaptor protein which contains five LIM domains, or double zinc fingers. The protein is likely involved in integrin signaling through its LIM domain-mediated interaction with integrin-linked kinase, found in focal adhesion plaques. It is also thought to act as a bridge linking integrin-linked kinase to NCK adaptor protein 2, which is involved in growth factor receptor kinase signaling pathways. Its localization to the periphery of spreading cells also suggests that this protein may play a role in integrin-mediated cell adhesion or spreading. Several transcript variants encoding different isoforms have been found for this gene.

Immunogen information

Gene ID:

3987

Uniprot

P48059

Synonyms:

LIMS1; PINCH; PINCH-1; PINCH1

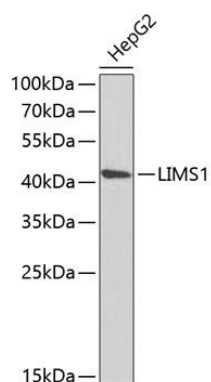
Immunogen:

Recombinant fusion protein containing a sequence corresponding to amino acids 1-325 of human LIMS1 (NP_001180417.1).

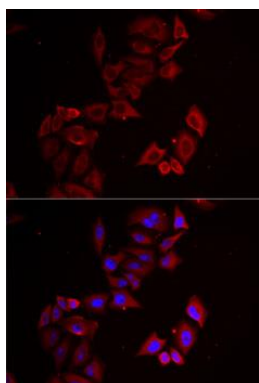
Storage:

Store at -20°C. Avoid freeze / thaw cycles. Buffer: PBS with 0.02% sodium azide, 50% glycerol, pH7.3.

Product Images



Western blot analysis of extracts of HepG2 cells, using LIMS1 antibody (CAB6384) at 1:1000 dilution. Secondary antibody: HRP Goat Anti-Rabbit IgG (H+L) (CABS014) at 1:10000 dilution. Lysates/proteins: 25ug per lane. Blocking buffer: 3% nonfat dry milk in TBST. Detection: ECL Enhanced Kit (CABM00021). Exposure time: 90s.



Immunofluorescence analysis of MCF7 cells using LIMS1 antibody (CAB6384). Blue: DAPI for nuclear staining.