

# MSRA Rabbit Polyclonal Antibody



CAB6389

## Product Information

### Size:

20uL, 50uL, 100uL, 200uL

### Observed MW:

26kDa

### Calculated MW:

18kDa/21kDa/23kDa/26kDa

### Applications:

WB IHC IF

### Reactivity:

Human, Mouse, Rat

## Protein Background

This gene encodes a ubiquitous and highly conserved protein that carries out the enzymatic reduction of methionine sulfoxide to methionine. Human and animal studies have shown the highest levels of expression in kidney and nervous tissue. The protein functions in the repair of oxidatively damaged proteins to restore biological activity. Alternative splicing results in multiple transcript variants.

## Immunogen information

### Gene ID:

4482

### Uniprot

Q9UJ68

### Synonyms:

MSRA; PMSR

## Antibody Information

### Recommended dilutions:

WB 1:500 - 1:2000 IHC 1:50  
- 1:200 IF 1:10 - 1:100

### Source:

Rabbit

### Isotype:

IgG

### Purification:

Affinity purification

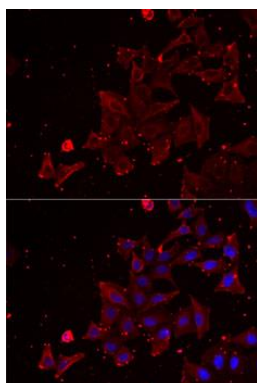
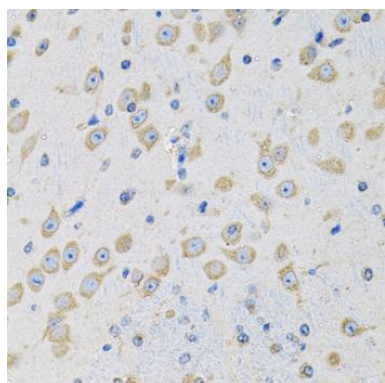
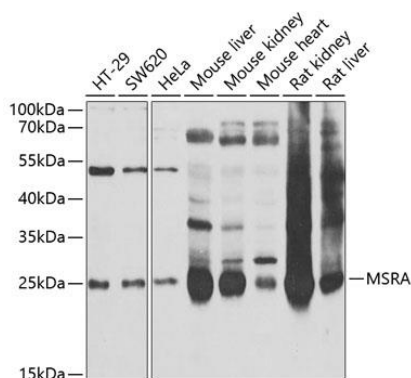
### Immunogen:

Recombinant fusion protein containing a sequence corresponding to amino acids 24-235 of human MSRA (NP\_036463.1).

### Storage:

Store at -20°C. Avoid freeze / thaw cycles. Buffer: PBS with 0.02% sodium azide, 50% glycerol, pH7.3.

## Product Images



Western blot analysis of extracts of various cell lines, using MSRA antibody (CAB6389) at 1:1000 dilution. Secondary antibody: HRP Goat Anti-Rabbit IgG (H+L) (CABS014) at 1:10000 dilution. Lysates/proteins: 25ug per lane. Blocking buffer: 3% nonfat dry milk in TBST. Detection: ECL Basic Kit (CABM00020). Exposure time: 30s.

Immunohistochemistry of paraffin-embedded mouse brain using MSRA antibody (CAB6389) at dilution of 1:100 (40x lens).

Immunofluorescence analysis of MCF7 cells using MSRA antibody (CAB6389). Blue: DAPI for nuclear staining.