

SERPINB9 Rabbit Polyclonal Antibody



CAB6393

Product Information

Size:

20uL, 50uL, 100uL, 200uL

Observed MW:

42kDa

Calculated MW:

42kDa

Applications:

WB IF

Reactivity:

Human, Mouse, Rat

Protein Background

This gene encodes a member of the serine protease inhibitor family which are also known as serpins. The encoded protein belongs to a subfamily of intracellular serpins. This protein inhibits the activity of the effector molecule granzyme B. Overexpression of this protein may prevent cytotoxic T-lymphocytes from eliminating certain tumor cells. A pseudogene of this gene is found on chromosome 6.

Immunogen information

Gene ID:

5272

Uniprot

P50453

Synonyms:

SERPINB9; CAP-3; CAP3; PI-9; PI9; serpin B9

Antibody Information

Recommended dilutions:

WB 1:500 - 1:2000 IF 1:10 - 1:100

Source:

Rabbit

Isotype:

IgG

Purification:

Affinity purification

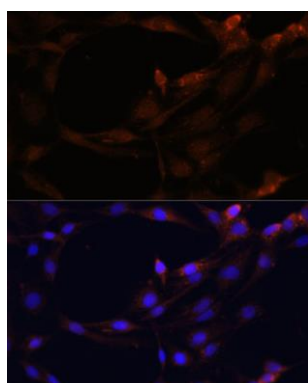
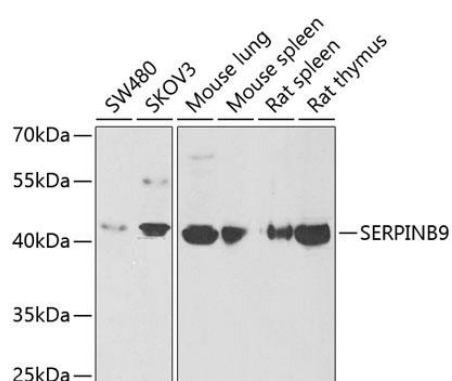
Immunogen:

Recombinant fusion protein containing a sequence corresponding to amino acids 1-376 of human SERPINB9 (NP_004146.1).

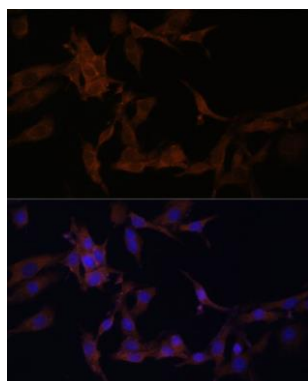
Storage:

Store at -20°C. Avoid freeze / thaw cycles. Buffer: PBS with 0.02% sodium azide, 50% glycerol, pH7.3.

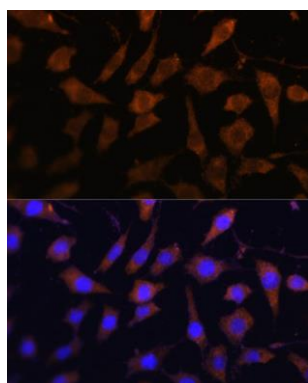
Product Images



Immunofluorescence analysis of C6 cells using SERPINB9 antibody (CAB6393) at dilution of 1:100. Blue: DAPI for nuclear staining.



Immunofluorescence analysis of HeLa cells using SERPINB9 antibody (CAB6393) at dilution of 1:100. Blue: DAPI for nuclear staining.



Immunofluorescence analysis of L929 cells using SERPINB9 antibody (CAB6393) at dilution of 1:100. Blue: DAPI for nuclear staining.