

PIP Rabbit Polyclonal Antibody



CAB6394

Product Information

Size:

20uL, 50uL, 100uL, 200uL

Observed MW:

Calculated MW:

16kDa

Applications:

IHC IF

Reactivity:

Human, Mouse, Rat

Antibody Information

Recommended dilutions:

IHC 1:50 - 1:100 IF 1:50 - 1:100

Source:

Rabbit

Isotype:

IgG

Purification:

Affinity purification

Protein Background

Immunogen information

Gene ID:

5304

Uniprot

P12273

Synonyms:

PIP; GCDFP-15; GCDFP15; GPIP4

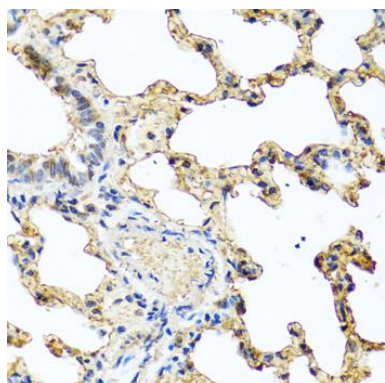
Immunogen:

Recombinant fusion protein containing a sequence corresponding to amino acids 29-146 of human PIP (NP_002643.1).

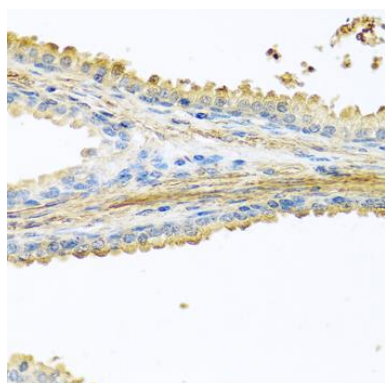
Storage:

Store at -20°C. Avoid freeze / thaw cycles. Buffer: PBS with 0.02% sodium azide, 50% glycerol, pH7.3.

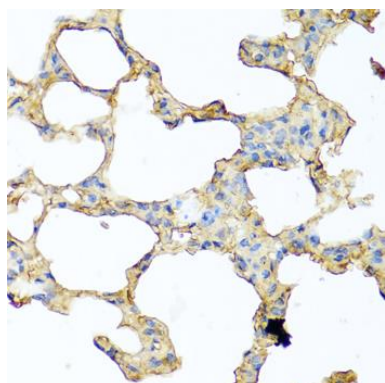
Product Images



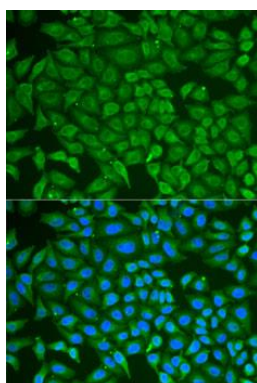
Immunohistochemistry of paraffin-embedded rat lung using PIP antibody (CAB6394) at dilution of 1:100 (40x lens).



Immunohistochemistry of paraffin-embedded human prostate using PIP antibody (CAB6394) at dilution of 1:100 (40x lens).



Immunohistochemistry of paraffin-embedded mouse lung using PIP antibody (CAB6394) at dilution of 1:100 (40x lens).



Immunofluorescence analysis of U2OS cells using PIP antibody (CAB6394). Blue: DAPI for nuclear staining.