

PSG1 Rabbit Polyclonal Antibody



CAB6399

Product Information

Size:

20uL, 50uL, 100uL, 200uL

Observed MW:

55-72kDa

Calculated MW:

46kDa/47kDa/48kDa

Applications:

WB IHC IF

Reactivity:

Human

Antibody Information

Recommended dilutions:

WB 1:500 - 1:2000 IHC 1:50
- 1:100 IF 1:50 - 1:200

Source:

Rabbit

Isotype:

IgG

Purification:

Affinity purification

Protein Background

Immunogen information

Gene ID:

5669

Uniprot

P11464

Synonyms:

PSG1; B1G1; CD66f; DHFRP2; FL-NCA-1/2; PBG1; PS-beta-C/D; PS-beta-G-1; PSBG-1; PSBG1; PSG95; PSGGA; PSGIIA; SP1

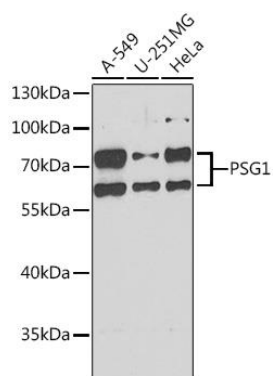
Immunogen:

Recombinant fusion protein containing a sequence corresponding to amino acids 180-419 of human PSG1 (NP_001171754.1).

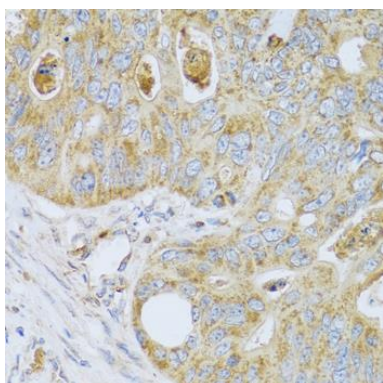
Storage:

Store at -20°C. Avoid freeze / thaw cycles. Buffer: PBS with 0.02% sodium azide, 50% glycerol, pH7.3.

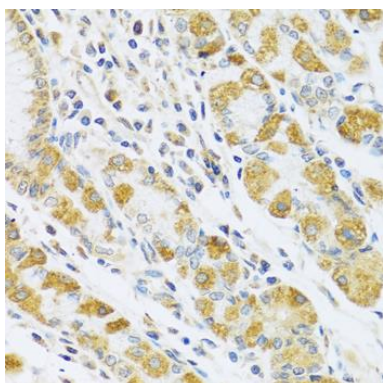
Product Images



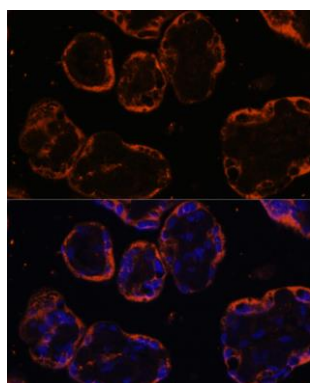
Western blot analysis of extracts of various cell lines, using PSG1 antibody (CAB6399) at 1:1000 dilution. Secondary antibody: HRP Goat Anti-Rabbit IgG (H+L) (CABS014) at 1:10000 dilution. Lysates/proteins: 25ug per lane. Blocking buffer: 3% nonfat dry milk in TBST. Detection: ECL Basic Kit (CABM00020). Exposure time: 90s.



Immunohistochemistry of paraffin-embedded human colon carcinoma using PSG1 antibody (CAB6399) at dilution of 1:100 (40x lens).



Immunohistochemistry of paraffin-embedded human stomach using PSG1 antibody (CAB6399) at dilution of 1:100 (40x lens).



Immunofluorescence analysis of human placenta cells using PSG1 antibody (CAB6399) at dilution of 1:100. Blue: DAPI for nuclear staining.