

# PYGB Rabbit Polyclonal Antibody



CAB6402

## Product Information

### Size:

20uL, 50uL, 100uL, 200uL

### Observed MW:

105kDa

### Calculated MW:

96kDa

### Applications:

WB IF IP

### Reactivity:

Human, Mouse, Rat

## Protein Background

The protein encoded by this gene is a glycogen phosphorylase found predominantly in the brain. The encoded protein forms homodimers which can associate into homotetramers, the enzymatically active form of glycogen phosphorylase. The activity of this enzyme is positively regulated by AMP and negatively regulated by ATP, ADP, and glucose-6-phosphate. This enzyme catalyzes the rate-determining step in glycogen degradation.

## Immunogen information

### Gene ID:

5834

### Uniprot

P11216

### Synonyms:

PYGB; GPBB

## Antibody Information

### Recommended dilutions:

WB 1:500 - 1:2000 IF 1:20 -  
1:100 IP 1:50 - 1:100

### Source:

Rabbit

### Isotype:

IgG

### Purification:

Affinity purification

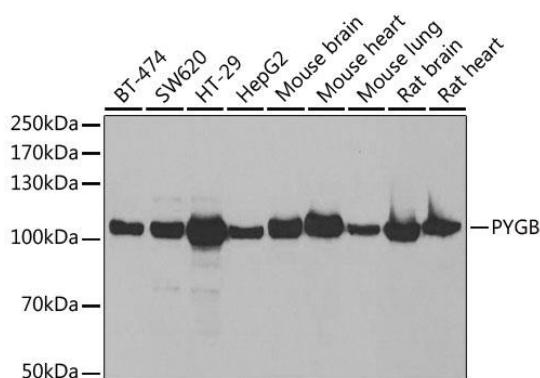
### Immunogen:

Recombinant fusion protein containing a sequence corresponding to amino acids 544-843 of human PYGB (NP\_002853.2).

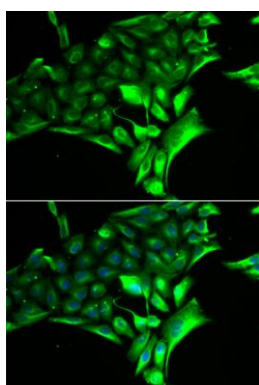
### Storage:

Store at -20°C. Avoid freeze / thaw cycles. Buffer: PBS with 0.02% sodium azide, 50% glycerol, pH7.3.

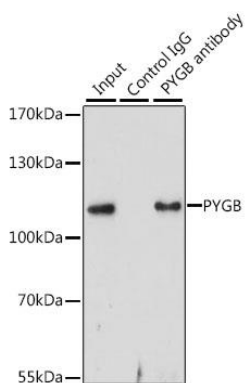
## Product Images



Western blot analysis of extracts of various cell lines, using PYGB antibody (CAB6402) at 1:1000 dilution. Secondary antibody: HRP Goat Anti-Rabbit IgG (H+L) (CABS014) at 1:10000 dilution. Lysates/proteins: 25ug per lane. Blocking buffer: 3% nonfat dry milk in TBST. Detection: ECL Basic Kit (CABM00020). Exposure time: 30s.



Immunofluorescence analysis of MCF-7 cells using PYGB antibody (CAB6402). Blue: DAPI for nuclear staining.



Immunoprecipitation analysis of 200ug extracts of HepG2 cells, using 3 ug PYGB antibody (CAB6402). Western blot was performed from the immunoprecipitate using PYGB antibody (CAB6402) at a dilution of 1:1000.