

# RCVRN Rabbit Polyclonal Antibody



CAB6404

## Product Information

### Size:

20uL, 50uL, 100uL, 200uL

### Observed MW:

23kDa

### Calculated MW:

23kDa

### Applications:

WB IHC IF

### Reactivity:

Human, Mouse, Rat

## Protein Background

This gene encodes a member of the recoverin family of neuronal calcium sensors. The encoded protein contains three calcium-binding EF-hand domains and may prolong the termination of the phototransduction cascade in the retina by blocking the phosphorylation of photo-activated rhodopsin. Recoverin may be the antigen responsible for cancer-associated retinopathy.

## Immunogen information

### Gene ID:

5957

### Uniprot

P35243

### Synonyms:

RCVRN; RCV1; recoverin

## Antibody Information

### Recommended dilutions:

WB 1:500 - 1:2000 IHC 1:50  
- 1:200 IF 1:10 - 1:100

### Source:

Rabbit

### Isotype:

IgG

### Purification:

Affinity purification

### Immunogen:

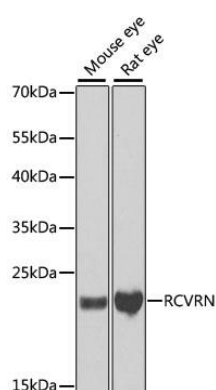
Recombinant fusion protein containing a sequence corresponding to amino acids 1-200 of human RCVRN (NP\_002894.1).

### Storage:

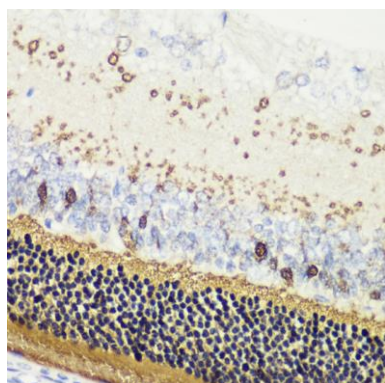
Store at -20°C. Avoid freeze / thaw cycles. Buffer: PBS with 0.02% sodium azide, 50% glycerol, pH7.3.

## Product Images

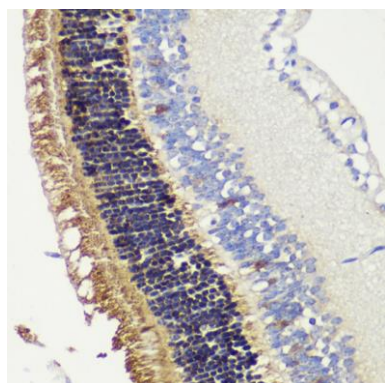
---



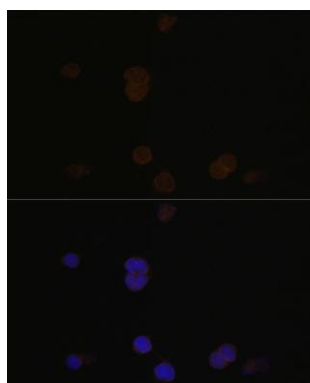
Western blot analysis of extracts of various cell lines, using RCVRN antibody (CAB6404) at 1:1000 dilution. Secondary antibody: HRP Goat Anti-Rabbit IgG (H+L) (CABS014) at 1:10000 dilution. Lysates/proteins: 25ug per lane. Blocking buffer: 3% nonfat dry milk in TBST. Detection: ECL Basic Kit (CABM00020). Exposure time: 15s.



Immunohistochemistry of paraffin-embedded rat retina using RCVRN antibody (CAB6404) at dilution of 1:200 (40x lens).



Immunohistochemistry of paraffin-embedded mouse retina using RCVRN antibody (CAB6404) at dilution of 1:200 (40x lens).



Immunofluorescence analysis of Y79 cells using RCVRN antibody (CAB6404) at dilution of 1:100. Blue: DAPI for nuclear staining.