

# XCL1 Rabbit Polyclonal Antibody



CAB6408

---

## Product Information

### Size:

20uL, 50uL, 100uL, 200uL

### Observed MW:

### Calculated MW:

12kDa

### Applications:

IF

### Reactivity:

Human

## Protein Background

This antimicrobial gene encodes a member of the chemokine superfamily. Chemokines function in inflammatory and immunological responses, inducing leukocyte migration and activation. The encoded protein is a member of the C-chemokine subfamily, retaining only two of four cysteines conserved in other chemokines, and is thought to be specifically chemotactic for T cells. This gene and a closely related family member are located on the long arm of chromosome 1.

## Immunogen information

### Gene ID:

6375

### Uniprot

P47992

### Synonyms:

XCL1; ATAC; LPTN; LTN; SCM-1; SCM-1a; SCM1; SCM1A; SCYC1

## Antibody Information

### Recommended dilutions:

IF 1:50 - 1:100

### Source:

Rabbit

### Isotype:

IgG

### Purification:

Affinity purification

### Immunogen:

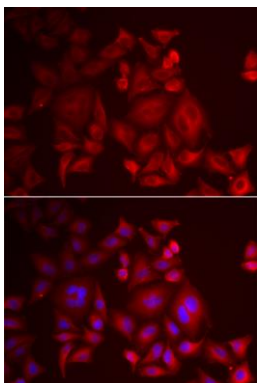
Recombinant fusion protein containing a sequence corresponding to amino acids 22-114 of human XCL1 (NP\_002986.1).

### Storage:

Store at -20°C. Avoid freeze / thaw cycles. Buffer: PBS with 0.02% sodium azide, 50% glycerol, pH7.3.

## Product Images

---



Immunofluorescence analysis of U2OS cells using XCL1 antibody (CAB6408). Blue: DAPI for nuclear staining.