

# SPINT1 Rabbit Polyclonal Antibody



CAB6411

---

## Product Information

### Size:

20uL, 50uL, 100uL, 200uL

### Observed MW:

70kDa

### Calculated MW:

56kDa/58kDa

### Applications:

WB IHC IF

### Reactivity:

Human, Mouse, Rat

## Protein Background

The protein encoded by this gene is a member of the Kunitz family of serine protease inhibitors. The protein is a potent inhibitor specific for HGF activator and is thought to be involved in the regulation of the proteolytic activation of HGF in injured tissues. Alternative splicing results in multiple variants encoding different isoforms.

## Immunogen information

### Gene ID:

6692

### Uniprot

O43278

### Synonyms:

SPINT1; HAI; HAI1; MANSC2

## Antibody Information

### Recommended dilutions:

WB 1:500 - 1:2000 IHC 1:50  
- 1:100 IF 1:50 - 1:100

### Source:

Rabbit

### Isotype:

IgG

### Purification:

Affinity purification

### Immunogen:

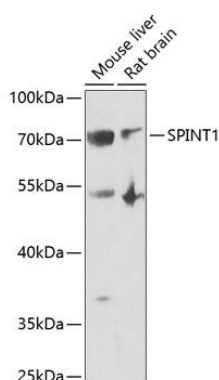
Recombinant fusion protein containing a sequence corresponding to amino acids 234-513 of human SPINT1 (NP\_003701.1).

### Storage:

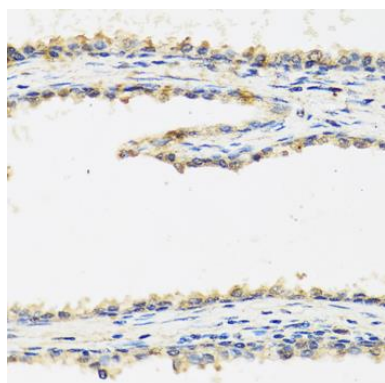
Store at -20°C. Avoid freeze / thaw cycles. Buffer: PBS with 0.02% sodium azide, 50% glycerol, pH7.3.

## Product Images

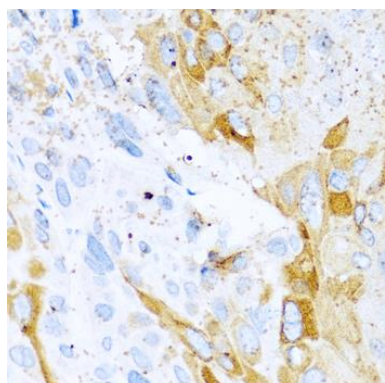
---



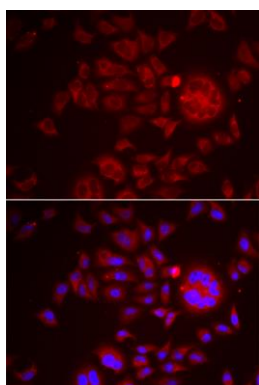
Western blot analysis of extracts of various cell lines, using SPINT1 antibody (CAB6411) at 1:1000 dilution. Secondary antibody: HRP Goat Anti-Rabbit IgG (H+L) (CABS014) at 1:10000 dilution. Lysates/proteins: 25ug per lane. Blocking buffer: 3% nonfat dry milk in TBST. Detection: ECL Enhanced Kit (CABM00021). Exposure time: 90s.



Immunohistochemistry of paraffin-embedded human prostate using SPINT1 antibody (CAB6411) at dilution of 1:100 (40x lens).



Immunohistochemistry of paraffin-embedded mouse esophageal cancer using SPINT1 antibody (CAB6411) at dilution of 1:100 (40x lens).



Immunofluorescence analysis of HeLa cells using SPINT1 antibody (CAB6411). Blue: DAPI for nuclear staining.