

# SPN Rabbit Polyclonal Antibody



CAB6412

---

## Product Information

### Size:

20uL, 50uL, 100uL, 200uL

### Observed MW:

130kDa

### Calculated MW:

40kDa

### Applications:

WB IHC

### Reactivity:

Human, Mouse

## Protein Background

The protein encoded by this gene is a major sialoglycoprotein found on the surface of thymocytes, T lymphocytes, monocytes, granulocytes, and some B lymphocytes. It may be part of a physiologic ligand-receptor complex involved in T-cell activation. During T-cell activation, this protein is actively removed from the T-cell-APC (antigen-presenting cell) contact site, suggesting a negative regulatory role in adaptive immune response.

## Immunogen information

### Gene ID:

6693

### Uniprot

P16150

### Synonyms:

SPN; CD43; GALGP; GPL115; LSN

## Antibody Information

### Recommended dilutions:

WB 1:500 - 1:2000 IHC 1:50  
- 1:200

### Source:

Rabbit

### Isotype:

IgG

### Purification:

Affinity purification

### Immunogen:

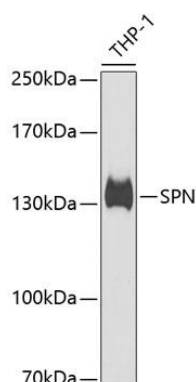
Recombinant fusion protein containing a sequence corresponding to amino acids 276-400 of human SPN (NP\_003114.1).

### Storage:

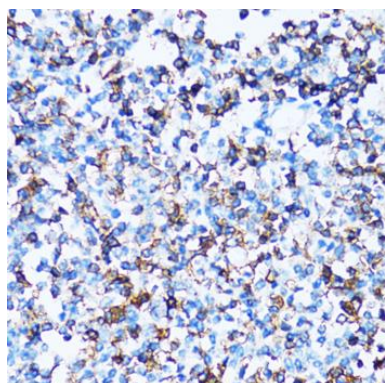
Store at -20°C. Avoid freeze / thaw cycles. Buffer: PBS with 0.02% sodium azide, 50% glycerol, pH7.3.

## Product Images

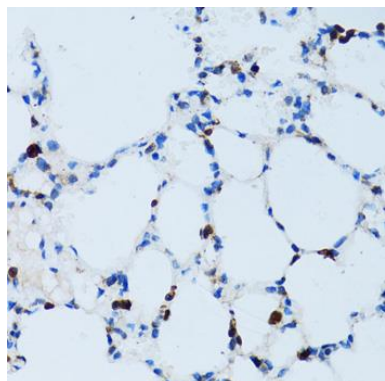
---



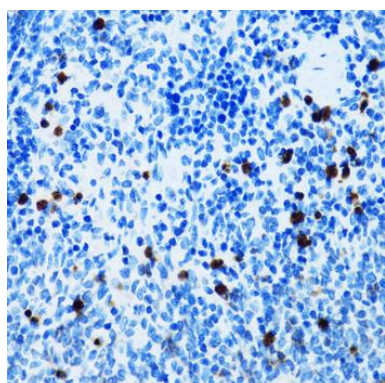
Western blot analysis of extracts of THP-1 cells, using SPN antibody (CAB6412) at 1:1000 dilution. Secondary antibody: HRP Goat Anti-Rabbit IgG (H+L) (CABS014) at 1:10000 dilution. Lysates/proteins: 25ug per lane. Blocking buffer: 3% nonfat dry milk in TBST. Detection: ECL Basic Kit (CABM00020). Exposure time: 60s.



Immunohistochemistry of paraffin-embedded human tonsil using SPN antibody (CAB6412) at dilution of 1:100 (40x lens).



Immunohistochemistry of paraffin-embedded mouse lung using SPN antibody (CAB6412) at dilution of 1:100 (40x lens).



Immunohistochemistry of paraffin-embedded mouse spleen using SPN antibody (CAB6412) at dilution of 1:100 (40x lens).