

# TNFAIP6 Rabbit Polyclonal Antibody



CAB6419

## Product Information

### Size:

20uL, 50uL, 100uL, 200uL

### Observed MW:

40kDa

### Calculated MW:

31kDa

### Applications:

WB IHC

### Reactivity:

Human, Mouse, Rat

## Antibody Information

### Recommended dilutions:

WB 1:500 - 1:2000 IHC 1:50  
- 1:200

### Source:

Rabbit

### Isotype:

IgG

### Purification:

Affinity purification

## Protein Background

The protein encoded by this gene is a secretory protein that contains a hyaluronan-binding domain, and thus is a member of the hyaluronan-binding protein family. The hyaluronan-binding domain is known to be involved in extracellular matrix stability and cell migration. This protein has been shown to form a stable complex with inter-alpha-inhibitor (I alpha I), and thus enhance the serine protease inhibitory activity of I alpha I, which is important in the protease network associated with inflammation. This gene can be induced by proinflammatory cytokines such as tumor necrosis factor alpha and interleukin-1. Enhanced levels of this protein are found in the synovial fluid of patients with osteoarthritis and rheumatoid arthritis.

## Immunogen information

### Gene ID:

7130

### Uniprot

P98066

### Synonyms:

TNFAIP6; TSG-6; TSG6

### Immunogen:

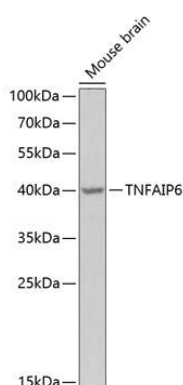
Recombinant fusion protein containing a sequence corresponding to amino acids 18-277 of human TNFAIP6 (NP\_009046.2).

### Storage:

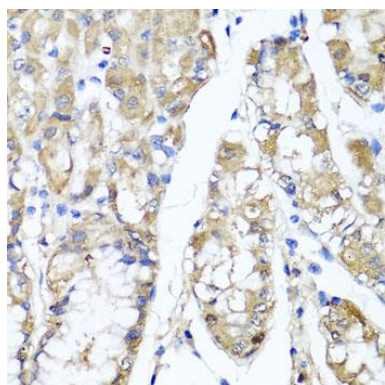
Store at -20°C. Avoid freeze / thaw cycles. Buffer: PBS with 0.02% sodium azide, 50% glycerol, pH7.3.

## Product Images

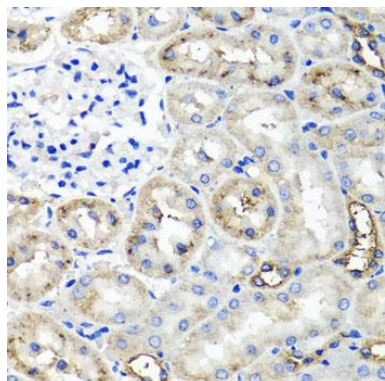
---



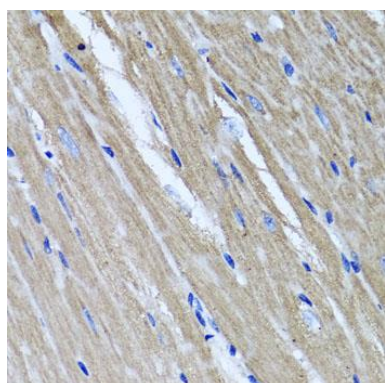
Western blot analysis of extracts of mouse brain, using TNFAIP6 Antibody (CAB6419) at 1:1000 dilution. Secondary antibody: HRP Goat Anti-Rabbit IgG (H+L) (CABS014) at 1:10000 dilution. Lysates/proteins: 25ug per lane. Blocking buffer: 3% nonfat dry milk in TBST. Detection: ECL Enhanced Kit (CABM00021). Exposure time: 90s.



Immunohistochemistry of paraffin-embedded human stomach using TNFAIP6 antibody (CAB6419) at dilution of 1:100 (40x lens).



Immunohistochemistry of paraffin-embedded rat kidney using TNFAIP6 antibody (CAB6419) at dilution of 1:100 (40x lens).



Immunohistochemistry of paraffin-embedded mouse heart using TNFAIP6 antibody (CAB6419) at dilution of 1:100 (40x lens).