

TUFM Rabbit Polyclonal Antibody



CAB6423

Product Information

Size:

20uL, 50uL, 100uL, 200uL

Observed MW:

48kDa

Calculated MW:

49kDa

Applications:

WB IHC IF IP

Reactivity:

Human, Mouse, Rat

Protein Background

This gene encodes a protein which participates in protein translation in mitochondria. Mutations in this gene have been associated with combined oxidative phosphorylation deficiency resulting in lactic acidosis and fatal encephalopathy. A pseudogene has been identified on chromosome 17.

Immunogen information

Gene ID:

7284

Uniprot

P49411

Synonyms:

TUFM; COXPD4; EF-TuMT; EFTU; P43

Antibody Information

Recommended dilutions:

WB 1:500 - 1:2000 IHC 1:50
- 1:200 IF 1:10 - 1:100 IP
1:50 - 1:200

Source:

Rabbit

Isotype:

IgG

Purification:

Affinity purification

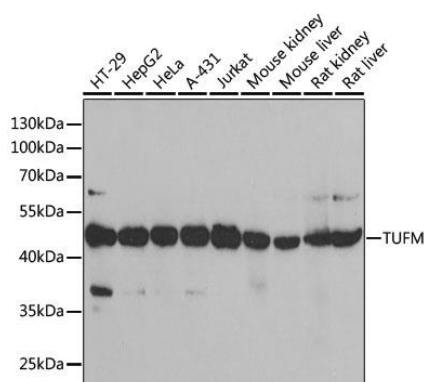
Immunogen:

Recombinant fusion protein containing a sequence corresponding to amino acids 186-455 of human TUFM (NP_003312.3).

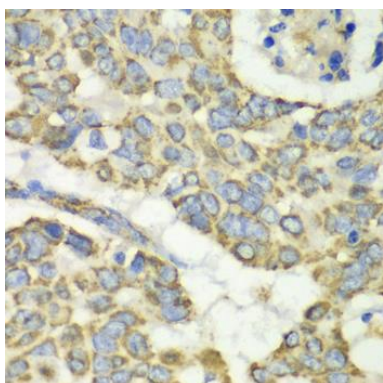
Storage:

Store at -20°C. Avoid freeze / thaw cycles. Buffer: PBS with 0.02% sodium azide, 50% glycerol, pH7.3.

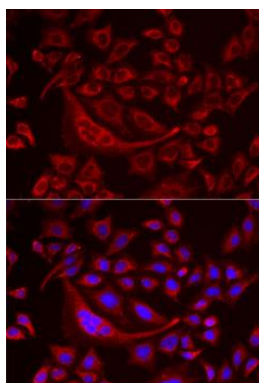
Product Images



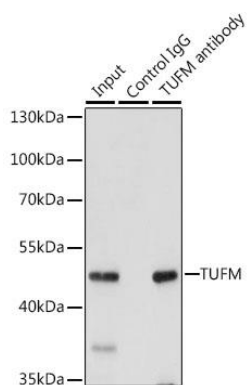
Western blot analysis of extracts of various cell lines, using TUFM antibody (CAB6423) at 1:1000 dilution. Secondary antibody: HRP Goat Anti-Rabbit IgG (H+L) (CABS014) at 1:10000 dilution. Lysates/proteins: 25ug per lane. Blocking buffer: 3% nonfat dry milk in TBST. Detection: ECL Basic Kit (CABM00020). Exposure time: 90s.



Immunohistochemistry of paraffin-embedded human esophageal cancer using TUFM antibody (CAB6423) at dilution of 1:100 (40x lens).



Immunofluorescence analysis of MCF7 cells using TUFM antibody (CAB6423). Blue: DAPI for nuclear staining.



Immunoprecipitation analysis of 200ug extracts of 293T cells, using 3 ug TUFM antibody (CAB6423). Western blot was performed from the immunoprecipitate using TUFM antibody (CAB6423) at a dilution of 1:1000.