

NAPG Rabbit Polyclonal Antibody



CAB6432

Product Information

Size:

20uL, 50uL, 100uL, 200uL

Observed MW:

36kDa

Calculated MW:

25kDa/34kDa

Applications:

WB IF

Reactivity:

Human, Mouse, Rat

Protein Background

This gene encodes soluble NSF attachment protein gamma. The soluble NSF attachment proteins (SNAPs) enable N-ethyl-maleimide-sensitive fusion protein (NSF) to bind to target membranes. NSF and SNAPs appear to be general components of the intracellular membrane fusion apparatus, and their action at specific sites of fusion must be controlled by SNAP receptors particular to the membranes being fused. The product of this gene mediates platelet exocytosis and controls the membrane fusion events of this process.

Immunogen information

Gene ID:

8774

Uniprot

Q99747

Synonyms:

NAPG; GAMMASNAP

Antibody Information

Recommended dilutions:

WB 1:500 - 1:2000 IF 1:10 - 1:100

Source:

Rabbit

Isotype:

IgG

Purification:

Affinity purification

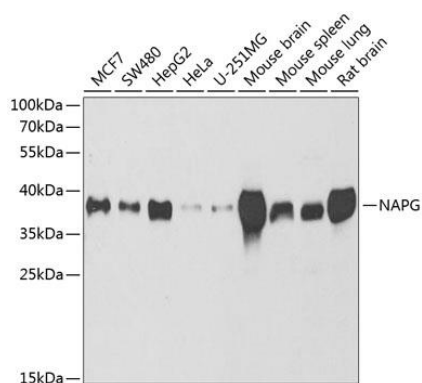
Immunogen:

Recombinant fusion protein containing a sequence corresponding to amino acids 1-312 of human NAPG (NP_003817.1).

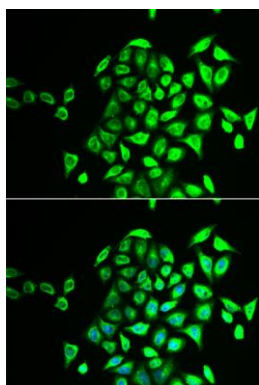
Storage:

Store at -20°C. Avoid freeze / thaw cycles. Buffer: PBS with 0.02% sodium azide, 50% glycerol, pH7.3.

Product Images



Western blot analysis of extracts of various cell lines, using NAPG antibody (CAB6432) at 1:1000 dilution. Secondary antibody: HRP Goat Anti-Rabbit IgG (H+L) (CABS014) at 1:10000 dilution. Lysates/proteins: 25ug per lane. Blocking buffer: 3% nonfat dry milk in TBST. Detection: ECL Basic Kit (CABM00020). Exposure time: 90s.



Immunofluorescence analysis of U2OS cells using NAPG antibody (CAB6432). Blue: DAPI for nuclear staining.